

## Anti-ERBB2/HER2 antibody (182-194) (STJ73338)

### GENERAL INFORMATION

Product Type	Primary antibodies
Applications	Pep-ELISA/IHC
Host / Source	Goat
Reactivity	Human

### PRODUCT PROPERTIES

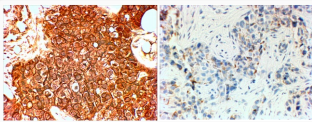
Clonality	Polyclonal
Concentration	0.5 mg/mL
Conjugation	Unconjugated
Purification	Purified from goat serum by ammonium sulphate precipitation followed by antigen affinity chromatography using the immunizing peptide.
Dilution Range	Peptide ELISA: antibody detection limit dilution 1:128000. IHC: In paraffin embedded Human breast cancer shows cell membrane and cytoplasm staining in the affected cells of Her+ type and not in triple negative type. Recommended concentration, 4-6
Formulation	0.5 mg/ml in Tris saline, 0.02% sodium azide, pH7.3 with 0.5% bovine serum albumin. NA
Isotype	IgG
Storage Instruction	Store at -20°C on receipt and minimise freeze-thaw cycles.

### TARGET INFORMATION

Gene ID	<a href="#">2064</a>
Gene Symbol	<a href="#">ERBB2</a>
UniProt ID	<a href="#">ERBB2_HUMAN</a>
Immunogen Region	182-194
Immunogen Sequence	TLIDTNRSRACHP
Specificity	This antibody is expected to recognize both reported isoforms (NP_004439.2; NP_001005862.1). The immunizing peptide represents part of the extracellular domain.

### ADDITIONAL INFORMATION

Note STRICTLY FOR FURTHER SCIENTIFIC RESEARCH USE ONLY (RUO). MUST NOT TO BE USED IN DIAGNOSTIC OR THERAPEUTIC APPLICATIONS.



STJ73338 (4µg/ml) staining of paraffin embedded Human breast cancer (Her+ left, triple negative right). Steamed antigen retrieval with citrate buffer pH 6, HRP-staining.