

Anti-EEA1 antibody (821-835) (STJ73333)

GENERAL INFORMATION

Product Type	Primary antibodies
Applications	Pep-ELISA/WB/IF
Host / Source	Goat
Reactivity	Human

PRODUCT PROPERTIES

Clonality	Polyclonal
Concentration	0.5 mg/mL
Conjugation	Unconjugated
Purification	Purified from goat serum by ammonium sulphate precipitation followed by antigen affinity chromatography using the immunizing peptide.
Dilution Range	Peptide ELISA: antibody detection limit dilution 1:128000. WB: Approx 200kDa band observed in lysates of cell line HEK293 (calculated MW of 162kDa according to NP_003557.2). This molecular weight is routinely observed by other sources. Recommend
Formulation	0.5 mg/ml in Tris saline, 0.02% sodium azide, pH7.3 with 0.5% bovine serum albumin. NA
Isotype	IgG
Storage Instruction	Store at -20°C on receipt and minimise freeze-thaw cycles.

TARGET INFORMATION

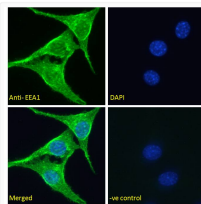
Gene ID	8411
Gene Symbol	EEA1
UniProt ID	EEA1_HUMAN
Immunogen Region	821-835
Immunogen Sequence	QETKIQHEELNRIQ

ADDITIONAL INFORMATION

Note STRICTLY FOR FURTHER SCIENTIFIC RESEARCH USE ONLY (RUO). MUST NOT TO BE USED IN DIAGNOSTIC OR THERAPEUTIC APPLICATIONS.



STJ73333 (0.3 µg/ml) staining of HEK293 lysate (35 µg protein in RIPA buffer). Detected by chemiluminescence.



STJ73333 Immunofluorescence analysis of paraformaldehyde fixed NIH3T3 cells, permeabilized with 0.15% Triton. Primary incubation 1hr (5 µg/ml) followed by Alexa Fluor 488 secondary antibody (2 µg/ml), showing vesicle/cytoplasmic staining. The nuclear stain is DAPI (blue). Negative control: Unimmunized goat IgG (5 µg/ml) followed by Alexa Fluor 488 secondary antibody (2 µg/ml).