

## Anti-ROR1 antibody (C-Term) (STJ73319)

### GENERAL INFORMATION

Product Type	Primary antibodies
Applications	Pep-ELISA/IHC
Host / Source	Goat
Reactivity	Human/Mouse/Rat

### PRODUCT PROPERTIES

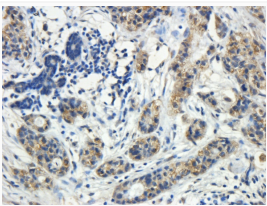
Clonality	Polyclonal
Concentration	0.5 mg/mL
Conjugation	Unconjugated
Purification	Purified from goat serum by ammonium sulphate precipitation followed by antigen affinity chromatography using the immunizing peptide.
Dilution Range	Peptide ELISA: antibody detection limit dilution 1:128000. IHC: Paraffin embedded Human Prostate. Recommended concentration: 4-6µg/ml.
Formulation	0.5 mg/ml in Tris saline, 0.02% sodium azide, pH7.3 with 0.5% bovine serum albumin. NA
Isotype	IgG
Storage Instruction	Store at -20°C on receipt and minimise freeze-thaw cycles.

### TARGET INFORMATION

Gene ID	<a href="#">4919</a>
Gene Symbol	<a href="#">ROR1</a>
UniProt ID	<a href="#">ROR1_HUMAN</a>
Immunogen Region	C-Term
Immunogen Sequence	GNKSQKPYKIDSKQA
Specificity	This antibody is expected to recognize isoform 1 (NP_005003.2) only.

### ADDITIONAL INFORMATION

Note STRICTLY FOR FURTHER SCIENTIFIC RESEARCH USE ONLY (RUO). MUST NOT TO BE USED IN DIAGNOSTIC OR THERAPEUTIC APPLICATIONS.



STJ73319 (5µg/ml) staining of paraffin embedded Human Breast Cancer. Heated antigen retrieval with citrate buffer pH 6, DAB-staining.