

Anti-ENT1 antibody (N-Term) (STJ73314)

GENERAL INFORMATION

Product Type	Primary antibodies
Applications	Pep-ELISA/WB
Host / Source	Goat
Reactivity	Human/Mouse/Rat/Dog/Cow

PRODUCT PROPERTIES

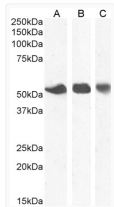
Clonality	Polyclonal
Concentration	0.5 mg/mL
Conjugation	Unconjugated
Purification	Purified from goat serum by ammonium sulphate precipitation followed by antigen affinity chromatography using the immunizing peptide.
Dilution Range	Peptide ELISA: antibody detection limit dilution 1:4000. WB: Approx 50-55kDa band observed in Human Placenta, Spleen and Breast lysates (calculated MW of 50.2kDa according to NP_001071643.1). Recommended concentration: 0.3-1µg/ml. Primary incubat
Formulation	0.5 mg/ml in Tris saline, 0.02% sodium azide, pH7.3 with 0.5% bovine serum albumin. NA
Isotype	IgG
Storage Instruction	Store at -20°C on receipt and minimise freeze-thaw cycles.

TARGET INFORMATION

Gene ID	2030
Gene Symbol	SLC29A1
UniProt ID	S29A1_HUMAN
Immunogen Region	N-Term
Immunogen Sequence	TSHQPQDRYKAVW
Specificity	Reported variants represent identical protein: NP_001071642.1, NP_001071645.1, NP_001071644.1, NP_004946.1, NP_001071643.1

ADDITIONAL INFORMATION

Note STRICTLY FOR FURTHER SCIENTIFIC RESEARCH USE ONLY (RUO). MUST NOT TO BE USED IN DIAGNOSTIC OR THERAPEUTIC APPLICATIONS.



STJ73314 (1µg/ml) staining of Human Breast (A) , Placenta (B) and Spleen (C) lysate. (35µg protein in RIPA buffer). Detected by chemiluminescence.