

Anti-Flotillin 1, Biotinylated antibody (C-Term) {Biotin} (STJ73282)

GENERAL INFORMATION

| | |
|---------------|--------------------|
| Product Type | Primary antibodies |
| Applications | Pep-ELISA/WB |
| Host / Source | Goat |
| Reactivity | Human/Dog/Pig/Cow |

PRODUCT PROPERTIES

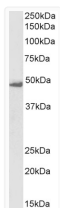
| | |
|---------------------|---|
| Clonality | Polyclonal |
| Concentration | 0.5 mg/mL |
| Conjugation | Biotin |
| Purification | Purified from goat serum by ammonium sulphate precipitation followed by antigen affinity chromatography using the immunizing peptide. |
| Dilution Range | Peptide ELISA: antibody detection limit dilution 1:2000. WB: Approx 48kDa band observed in lysates of cell line K562 (calculated MW of 47.4kDa according to NP_005794.1). See non-biotinylated parental product's datasheet for further QC data. Recom |
| Formulation | 0.5 mg/ml in Tris saline, 0.02% sodium azide, pH7.3 with 0.5% bovine serum albumin. NA |
| Isotype | IgG |
| Storage Instruction | Store at -20°C on receipt and minimise freeze-thaw cycles. |

TARGET INFORMATION

| | |
|--------------------|--|
| Gene ID | 10211 |
| Gene Symbol | FLOT1 |
| UniProt ID | FLOT1_HUMAN |
| Immunogen Region | C-Term |
| Immunogen Sequence | CSISQVNHKPLRTA. |
| Specificity | This antibody is expected to recognize both reported isoforms (NP_005794.1; NP_001305804.1). |

ADDITIONAL INFORMATION

Note STRICTLY FOR FURTHER SCIENTIFIC RESEARCH USE ONLY (RUO). MUST NOT TO BE USED IN DIAGNOSTIC OR THERAPEUTIC APPLICATIONS.



Biotinylated STJ70184 (1µg/ml) staining of K562 lysate (35µg protein in RIPA buffer), exactly mirroring its parental non-biotinylated product. Primary incubation was 1 hour. Detected by chemiluminescence, using streptavidin-HRP and using NAP blocker as a substitute for skimmed milk.