

Anti-HSP60/HSPD1 antibody (333-344) (STJ73246)

GENERAL INFORMATION

Product Type	Primary antibodies
Applications	Pep-ELISA/WB/IHC/IF
Host / Source	Goat
Reactivity	Human/Dog/Pig/Cow

PRODUCT PROPERTIES

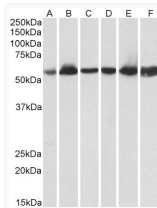
Clonality	Polyclonal
Concentration	0.5 mg/mL
Conjugation	Unconjugated
Purification	Purified from goat serum by ammonium sulphate precipitation followed by antigen affinity chromatography using the immunizing peptide.
Dilution Range	Peptide ELISA: antibody detection limit dilution 1:64000. WB: Approx 60kDa band observed in Human and Pig Heart, Kidney and Liver and in Rat Kidney lysates (calculated MW of 61.1kDa according to Human NP_002147.2 and 60.9kDa according to Pig NP_0
Formulation	0.5 mg/ml in Tris saline, 0.02% sodium azide, pH7.3 with 0.5% bovine serum albumin. NA
Isotype	IgG
Storage Instruction	Store at -20°C on receipt and minimise freeze-thaw cycles.

TARGET INFORMATION

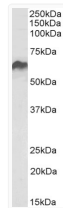
Gene ID	3329
Gene Symbol	HSPD1
UniProt ID	CH60_HUMAN
Immunogen Region	333-344
Immunogen Sequence	NLEDVQPHDLGK
Specificity	Reported variants represent identical protein: NP_955472.1, NP_002147.2.

ADDITIONAL INFORMATION

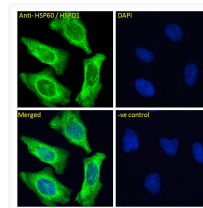
Note STRICTLY FOR FURTHER SCIENTIFIC RESEARCH USE ONLY (RUO). MUST NOT TO BE USED IN DIAGNOSTIC OR THERAPEUTIC APPLICATIONS.



STJ73246 (0.03µg/ml) staining of Human Heart (A), Kidney (B) and Liver (C) lysate and in Pig Heart (D), Kidney (E) and Liver (F) lysate (35µg protein in RIPA buffer). Detected by chemiluminescence.



STJ73246 (0.1µg/ml) staining of Rat Kidney lysate (35µg protein in RIPA buffer). Detected by chemiluminescence.



STJ73246 Immunofluorescence analysis of paraformaldehyde fixed HeLa cells, permeabilized with 0.15% Triton. Primary incubation 1hr (10ug/ml) followed by Alexa Fluor 488 secondary antibody (4ug/ml), showing Mitochondrial staining. The nuclear stain is DAPI (blue). Negative control: Unimmunized goat IgG (10ug/ml) followed by Alexa Fluor 488 secondary antibody (4ug/ml).