

## Anti-Argininosuccinate synthetase 1, Biotinylated antibody (Internal) {Biotin} (STJ73211)

### GENERAL INFORMATION

Product Type	Primary antibodies
Applications	Pep-ELISA/WB
Host / Source	Goat
Reactivity	Human/Mouse/Rat/Dog

### PRODUCT PROPERTIES

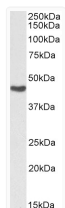
Clonality	Polyclonal
Concentration	0.5 mg/mL
Conjugation	Biotin
Purification	Purified from goat serum by ammonium sulphate precipitation followed by antigen affinity chromatography using the immunizing peptide.
Dilution Range	Peptide ELISA: antibody detection limit dilution 1:64000. WB: Approx 46kDa band observed in Human Kidney lysates (calculated MW of 46.5kDa according to NP_000041.2). See non-biotinylated parental product's datasheet for further QC data. Recommend
Formulation	0.5 mg/ml in Tris saline, 0.02% sodium azide, pH7.3 with 0.5% bovine serum albumin. NA
Isotype	IgG
Storage Instruction	Store at -20°C on receipt and minimise freeze-thaw cycles.

### TARGET INFORMATION

Gene ID	<a href="#">445</a>
Gene Symbol	<a href="#">ASS1</a>
UniProt ID	<a href="#">ASSY_HUMAN</a>
Immunogen Region	Internal
Immunogen Sequence	ENPKNQAPPGLYTKTQD.
Specificity	Reported variants represent identical protein: NP_446464.1, NP_000041.2

### ADDITIONAL INFORMATION

Note STRICTLY FOR FURTHER SCIENTIFIC RESEARCH USE ONLY (RUO). MUST NOT TO BE USED IN DIAGNOSTIC OR THERAPEUTIC APPLICATIONS.



Biotinylated STJ71128 (0.03 µg/ml) staining of Human Kidney lysate (35 µg protein in RIPA buffer), exactly mirroring its parental non-biotinylated product. Primary incubation was 1 hour. Detected by chemiluminescence, using streptavidin-HRP and using NAP blocker as a substitute for skimmed milk.