

## Anti-Latexin, Biotinylated antibody (C-Term) {Biotin} (STJ73176)

### GENERAL INFORMATION

|               |                     |
|---------------|---------------------|
| Product Type  | Primary antibodies  |
| Applications  | Pep-ELISA/WB        |
| Host / Source | Goat                |
| Reactivity    | Human/Mouse/Rat/Dog |

### PRODUCT PROPERTIES

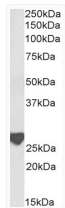
|                     |   |
|---------------------|---|
| Clonality           | Polyclonal  |
| Concentration       | 0.5 mg/mL   |
| Conjugation         | Biotin  |
| Purification        | Purified from goat serum by ammonium sulphate precipitation followed by antigen affinity chromatography using the immunizing peptide.   |
| Dilution Range      | Peptide ELISA: antibody detection limit dilution 1:128000.<br>WB: Approx 28kDa band observed in Rat Brain lysates (calculated MW of 25.6kDa according to Rat NP_113843.1). See non-biotinylated parental product's datasheet for further QC data. Recomme |
| Formulation         | 0.5 mg/ml in Tris saline, 0.02% sodium azide, pH7.3 with 0.5% bovine serum albumin. NA  |
| Isotype             | IgG   |
| Storage Instruction | Store at -20°C on receipt and minimise freeze-thaw cycles.  |

### TARGET INFORMATION

|                    |                           |
|--------------------|---------------------------|
| Gene ID            | <a href="#">56925</a>     |
| Gene Symbol        | <a href="#">LXN</a>       |
| UniProt ID         | <a href="#">LXN_HUMAN</a> |
| Immunogen Region   | C-Term                    |
| Immunogen Sequence | QYGTKVKHNSRLPKE.          |

### ADDITIONAL INFORMATION

Note STRICTLY FOR FURTHER SCIENTIFIC RESEARCH USE ONLY (RUO). MUST NOT TO BE USED IN DIAGNOSTIC OR THERAPEUTIC APPLICATIONS.



Biotinylated STJ71123 (0.3 µg/ml) staining of Rat Brain lysate (35 µg protein in RIPA buffer), exactly mirroring its parental non-biotinylated product. Primary incubation was 1 hour. Detected by chemiluminescence, using streptavidin-HRP and using NAP blocker as a substitute for skimmed milk.