

Anti-fibrinogen gamma chain antibody (166-178) (STJ73137)

GENERAL INFORMATION

Product Type	Primary antibodies
Applications	Pep-ELISA/WB
Host / Source	Goat
Reactivity	Human

PRODUCT PROPERTIES

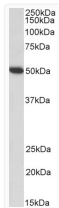
Clonality	Polyclonal
Concentration	0.5 mg/mL
Conjugation	Unconjugated
Purification	Purified from goat serum by ammonium sulphate precipitation followed by antigen affinity chromatography using the immunizing peptide.
Dilution Range	Peptide ELISA: antibody detection limit dilution 1:128000. WB: Approx 50kDa band observed in Human Plasma and Human Platelets lysates (calculated MW of 49.5kDa according to NP_000500.2). Recommended concentration: 0.01-0.03µg/ml.
Formulation	0.5 mg/ml in Tris saline, 0.02% sodium azide, pH7.3 with 0.5% bovine serum albumin. NA
Isotype	IgG
Storage Instruction	Store at -20°C on receipt and minimise freeze-thaw cycles.

TARGET INFORMATION

Gene ID	2266
Gene Symbol	FGG
UniProt ID	FIBG_HUMAN
Immunogen Region	166-178
Immunogen Sequence	KDTVQIHDITGKD
Specificity	This antibody is expected to recognize both reported isoforms (NP_000500.2; NP_068656.2).

ADDITIONAL INFORMATION

Note STRICTLY FOR FURTHER SCIENTIFIC RESEARCH USE ONLY (RUO). MUST NOT TO BE USED IN DIAGNOSTIC OR THERAPEUTIC APPLICATIONS.



STJ73137 (0.01µg/ml) staining of Human Platelets lysate (35µg protein in RIPA buffer). Primary incubation was 1 hour. Detected by chemiluminescence.