

Anti-ATG4A antibody (Internal) (STJ73116)

GENERAL INFORMATION

Product Type	Primary antibodies
Applications	Pep-ELISA/IHC
Host / Source	Goat
Reactivity	Human

PRODUCT PROPERTIES

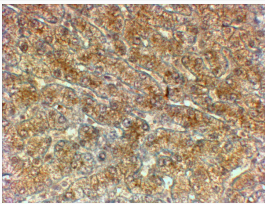
Clonality	Polyclonal
Concentration	0.5 mg/mL
Conjugation	Unconjugated
Purification	Purified from goat serum by ammonium sulphate precipitation followed by antigen affinity chromatography using the immunizing peptide.
Dilution Range	Peptide ELISA: antibody detection limit dilution 1:1000. IHC: In paraffin embedded Human Liver shows textured cytoplasm staining in the hepatocytes. Recommended concentration, 2-4µg/ml.
Formulation	0.5 mg/ml in Tris saline, 0.02% sodium azide, pH7.3 with 0.5% bovine serum albumin. NA
Isotype	IgG
Storage Instruction	Store at -20°C on receipt and minimise freeze-thaw cycles.

TARGET INFORMATION

Gene ID	115201
Gene Symbol	ATG4A
UniProt ID	ATG4A_HUMAN
Immunogen Region	Internal
Immunogen Sequence	TEENGTVNDQTFHC
Specificity	This antibody is expected to recognize both reported isoforms (NP_443168.2; NP_840054.1)

ADDITIONAL INFORMATION

Note STRICTLY FOR FURTHER SCIENTIFIC RESEARCH USE ONLY (RUO). MUST NOT TO BE USED IN DIAGNOSTIC OR THERAPEUTIC APPLICATIONS.



STJ73116 (2µg/ml) staining of paraffin embedded Human Liver. Steamed antigen retrieval with citrate buffer pH 6, HRP-staining.