

Anti-CAPRIN1 antibody (Internal) (STJ73106)

GENERAL INFORMATION

Product Type	Primary antibodies
Applications	Pep-ELISA/WB/IHC
Host / Source	Goat
Reactivity	Human/Rat/Dog/Pig

PRODUCT PROPERTIES

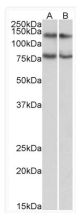
Clonality	Polyclonal
Concentration	0.5 mg/mL
Conjugation	Unconjugated
Purification	Purified from goat serum by ammonium sulphate precipitation followed by antigen affinity chromatography using the immunizing peptide.
Dilution Range	Peptide ELISA: antibody detection limit dilution 1:16000. WB: Approx 80+140kDa bands observed in lysates of cell line Caco-2, HeLa, Jurkat and K562 (calculated MW of 78.4kDa according to NP_005889.3). The 140kDa band corresponds to the reported p
Formulation	0.5 mg/ml in Tris saline, 0.02% sodium azide, pH7.3 with 0.5% bovine serum albumin. NA
Isotype	IgG
Storage Instruction	Store at -20°C on receipt and minimise freeze-thaw cycles.

TARGET INFORMATION

Gene ID	4076
Gene Symbol	CAPRIN1
UniProt ID	CAPR1_HUMAN
Immunogen Region	Internal
Immunogen Sequence	EQRPQKEPIDQ
Specificity	This antibody is expected to recognize both reported isoforms (NP_005889.3; NP_976240.1).

ADDITIONAL INFORMATION

Note STRICTLY FOR FURTHER SCIENTIFIC RESEARCH USE ONLY (RUO). MUST NOT TO BE USED IN DIAGNOSTIC OR THERAPEUTIC APPLICATIONS.



STJ73106 (0.3 µg/ml) staining of Jurkat (A) and HeLa (B) lysates (35 µg protein in RIPA buffer). Primary incubation was 1 hour. Detected by chemiluminescence.