

Anti-CX3CR1 antibody (34-47) (STJ73097)

GENERAL INFORMATION

Product Type	Primary antibodies
Applications	Pep-ELISA/WB
Host / Source	Goat
Reactivity	Human

PRODUCT PROPERTIES

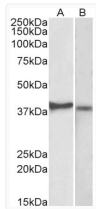
Clonality	Polyclonal
Concentration	0.5 mg/mL
Conjugation	Unconjugated
Purification	Purified from goat serum by ammonium sulphate precipitation followed by antigen affinity chromatography using the immunizing peptide.
Dilution Range	Peptide ELISA: antibody detection limit dilution 1:128000. WB: Approx. 37kDa band observed in lysates of cell line Daudi (calculated MW of 40.4kDa according to NP_001328.1). Recommended concentration: 1-2µg/ml. Primary incubation 1 hour at room t
Formulation	0.5 mg/ml in Tris saline, 0.02% sodium azide, pH7.3 with 0.5% bovine serum albumin. NA
Isotype	IgG
Storage Instruction	Store at -20°C on receipt and minimise freeze-thaw cycles.

TARGET INFORMATION

Gene ID	1524
Gene Symbol	CX3CR1
UniProt ID	CX3C1_HUMAN
Immunogen Region	34-47
Immunogen Sequence	DQFPESVTENFEYD
Specificity	This antibody is expected to recognize both reported isoforms (NP_001164645.1; NP_001328.1). Reported variants represent identical protein: NP_001164643.1, NP_001328.1, NP_001164642.1.

ADDITIONAL INFORMATION

Note **STRICTLY FOR FURTHER SCIENTIFIC RESEARCH USE ONLY (RUO). MUST NOT TO BE USED IN DIAGNOSTIC OR THERAPEUTIC APPLICATIONS.**



STJ73097 (2µg/ml) staining of Kelly (A) and U251-MG (B) lysates (35µg protein in RIPA buffer). Primary incubation was 1 hour. Detected by chemiluminescence.