

## Anti-DMRT2 antibody (C-Term) (STJ73076)

### GENERAL INFORMATION

Product Type	Primary antibodies
Applications	Pep-ELISA/IHC
Host / Source	Goat
Reactivity	Human/Mouse/Rat/Cow

### PRODUCT PROPERTIES

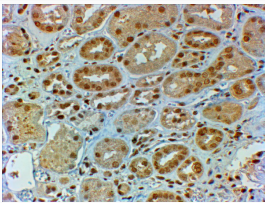
Clonality	Polyclonal
Concentration	0.5 mg/mL
Conjugation	Unconjugated
Purification	Purified from goat serum by ammonium sulphate precipitation followed by antigen affinity chromatography using the immunizing peptide.
Dilution Range	Peptide ELISA: antibody detection limit dilution 1:8000. IHC: In paraffin embedded Human Kidney shows nuclear staining primarily in the DCT. Recommended concentration, 2-4µg/ml.
Formulation	0.5 mg/ml in Tris saline, 0.02% sodium azide, pH7.3 with 0.5% bovine serum albumin. NA
Isotype	IgG
Storage Instruction	Store at -20°C on receipt and minimise freeze-thaw cycles.

### TARGET INFORMATION

Gene ID	<a href="#">10655</a>
Gene Symbol	<a href="#">DMRT2</a>
UniProt ID	<a href="#">DMRT2_HUMAN</a>
Immunogen Region	C-Term
Immunogen Sequence	KRPSSAITRVSQ
Specificity	This antibody is expected to recognize isoform 2 only (NP_870987.2). Reported variants NP_001124337.1 and NP_006548.1 represent identical protein

### ADDITIONAL INFORMATION

Note STRICTLY FOR FURTHER SCIENTIFIC RESEARCH USE ONLY (RUO). MUST NOT TO BE USED IN DIAGNOSTIC OR THERAPEUTIC APPLICATIONS.



STJ73076 (2µg/ml) staining of paraffin embedded Human Kidney. Steamed antigen retrieval with citrate buffer pH 6, HRP-staining.