

## Anti-proteinase 3/myeloblastin antibody (88-98) (STJ73068)

### GENERAL INFORMATION

|               |                        |
|---------------|------------------------|
| Product Type  | Primary antibodies     |
| Applications  | Pep-ELISA/WB/IHC/IF/FC |
| Host / Source | Goat                   |
| Reactivity    | Human                  |

### PRODUCT PROPERTIES

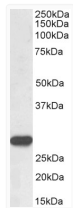
|                     |   |
|---------------------|---|
| Clonality           | Polyclonal  |
| Concentration       | 0.5 mg/mL   |
| Conjugation         | Unconjugated  |
| Purification        | Purified from goat serum by ammonium sulphate precipitation followed by antigen affinity chromatography using the immunizing peptide.   |
| Dilution Range      | Peptide ELISA: antibody detection limit dilution 1:8000.<br>WB: Approx. 27kDa band observed in Human Spleen lysates, approx. 25kDa in Human Bone Marrow lysates, and approx. 26kDa in preliminary testing of THP-1 cell lysate (calculated MW of 27.8kDa) |
| Formulation         | 0.5 mg/ml in Tris saline, 0.02% sodium azide, pH7.3 with 0.5% bovine serum albumin. NA  |
| Isotype             | IgG   |
| Storage Instruction | Store at -20°C on receipt and minimise freeze-thaw cycles.  |

### TARGET INFORMATION

|                    |                             |
|--------------------|-----------------------------|
| Gene ID            | <a href="#">5657</a>        |
| Gene Symbol        | <a href="#">PRTN3</a>       |
| UniProt ID         | <a href="#">PRTN3_HUMAN</a> |
| Immunogen Region   | 88-98                       |
| Immunogen Sequence | HNVRTQEPTQQ                 |

### ADDITIONAL INFORMATION

Note STRICTLY FOR FURTHER SCIENTIFIC RESEARCH USE ONLY (RUO). MUST NOT TO BE USED IN DIAGNOSTIC OR THERAPEUTIC APPLICATIONS.



E12324 (0.3 µg/ml) staining of Human Spleen lysate (35 µg protein in RIPA buffer). Detected by chemiluminescence.