

Anti-NAT1 antibody (272-286) (STJ73062)

GENERAL INFORMATION

Product Type	Primary antibodies
Applications	Pep-ELISA/WB/IHC
Host / Source	Goat
Reactivity	Human

PRODUCT PROPERTIES

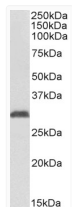
Clonality	Polyclonal
Concentration	0.5 mg/mL
Conjugation	Unconjugated
Purification	Purified from goat serum by ammonium sulphate precipitation followed by antigen affinity chromatography using the immunizing peptide.
Dilution Range	Peptide ELISA: antibody detection limit dilution 1:128000. WB: Approx 30kDa band observed in Human Erythrocytes lysates (calculated MW of 33.9kDa according to NP_000653.3). Recommended concentration: 1-3µg/ml. IHC: Paraffin embedded Human Ure
Formulation	0.5 mg/ml in Tris saline, 0.02% sodium azide, pH7.3 with 0.5% bovine serum albumin. NA
Isotype	IgG
Storage Instruction	Store at -20°C on receipt and minimise freeze-thaw cycles.

TARGET INFORMATION

Gene ID	9
Gene Symbol	NAT1
UniProt ID	ARY1_HUMAN
Immunogen Region	272-286
Immunogen Sequence	NISLQRKLVPKHGDR
Specificity	This antibody is expected to recognize both reported isoforms (NP_000653.3; NP_001153647.1). Reported variants represent identical protein: NP_001153646.1, NP_001153642.1, NP_001153645.1, NP_001153644.1, NP_001153651.1, NP_001153643.1, NP_000653.3. R

ADDITIONAL INFORMATION

Note STRICTLY FOR FURTHER SCIENTIFIC RESEARCH USE ONLY (RUO). MUST NOT TO BE USED IN DIAGNOSTIC OR THERAPEUTIC APPLICATIONS.



STJ73062 (1µg/ml) staining of Human Erythrocytes lysate (35µg protein in RIPA buffer). Primary incubation was 1 hour. Detected by chemiluminescence.