

Anti-Cone-rod homeobox antibody (Internal) (STJ73027)

GENERAL INFORMATION

Product Type	Primary antibodies
Applications	Pep-ELISA/WB/IHC
Host / Source	Goat
Reactivity	Human/Mouse/Rat/Pig/Cow

PRODUCT PROPERTIES

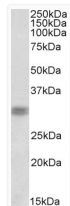
Clonality	Polyclonal
Concentration	0.5 mg/mL
Conjugation	Unconjugated
Purification	Purified from goat serum by ammonium sulphate precipitation followed by antigen affinity chromatography using the immunizing peptide.
Dilution Range	Peptide ELISA: antibody detection limit dilution 1:128000. WB: Approx 30kDa band observed in Rat Retina lysates (calculated MW of 32.3kDa according to Human NP_000545.1 and to Rat NP_068627.1). Recommended concentration: 1-3µg/ml. Primary incubat
Formulation	0.5 mg/ml in Tris saline, 0.02% sodium azide, pH7.3 with 0.5% bovine serum albumin. NA
Isotype	IgG
Storage Instruction	Store at -20°C on receipt and minimise freeze-thaw cycles.

TARGET INFORMATION

Gene ID	1406
Gene Symbol	CRX
UniProt ID	CRX_HUMAN
Immunogen Region	Internal
Immunogen Sequence	DPLDYKDQSAWK

ADDITIONAL INFORMATION

Note STRICTLY FOR FURTHER SCIENTIFIC RESEARCH USE ONLY (RUO). MUST NOT TO BE USED IN DIAGNOSTIC OR THERAPEUTIC APPLICATIONS.



STJ73027 (1µg/ml) staining of Rat Retina lysate (35µg protein in RIPA buffer). Detected by chemiluminescence.