

## Anti-CREB1 antibody (96-109) (STJ73024)

### GENERAL INFORMATION

Product Type	Primary antibodies
Applications	Pep-ELISA/WB/IHC
Host / Source	Goat
Reactivity	Human/Mouse/Dog/Pig/Cow

### PRODUCT PROPERTIES

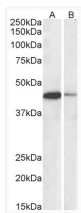
Clonality	Polyclonal
Concentration	0.5 mg/mL
Conjugation	Unconjugated
Purification	Purified from goat serum by ammonium sulphate precipitation followed by antigen affinity chromatography using the immunizing peptide.
Dilution Range	Peptide ELISA: antibody detection limit dilution 1:128000. WB: Approx 45kDa band observed in nuclear lysates of cell lines Jurkat and NIH3T3 (calculated MW of 36.7kDa according to NP_604391.1). This molecular weight is routinely observed by other
Formulation	0.5 mg/ml in Tris saline, 0.02% sodium azide, pH7.3 with 0.5% bovine serum albumin. NA
Isotype	IgG
Storage Instruction	Store at -20°C on receipt and minimise freeze-thaw cycles.

### TARGET INFORMATION

Gene ID	<a href="#">1385</a>
Gene Symbol	<a href="#">CREB1</a>
UniProt ID	<a href="#">CREB1_HUMAN</a>
Immunogen Region	96-109
Immunogen Sequence	DSQESVDSVTDSQK
Specificity	This antibody is expected to recognize both reported isoforms (NP_004370.1; NP_604391.1).

### ADDITIONAL INFORMATION

Note STRICTLY FOR FURTHER SCIENTIFIC RESEARCH USE ONLY (RUO). MUST NOT TO BE USED IN DIAGNOSTIC OR THERAPEUTIC APPLICATIONS.



STJ73024 (0.1 µg/ml) staining of Jurkat (A) and NIH3T3 (B) nuclear lysates (35 µg protein in RIPA buffer). Detected by chemiluminescence.