

Anti-CCDC3 antibody (134-148) (STJ72975)

GENERAL INFORMATION

Product Type	Primary antibodies
Applications	Pep-ELISA/WB/IHC
Host / Source	Goat
Reactivity	Human/Mouse/Rat/Dog/Pig/Cow

PRODUCT PROPERTIES

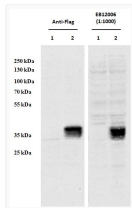
Clonality	Polyclonal
Concentration	0.5 mg/mL
Conjugation	Unconjugated
Purification	Purified from goat serum by ammonium sulphate precipitation followed by antigen affinity chromatography using the immunizing peptide.
Dilution Range	Peptide ELISA: antibody detection limit dilution 1:64000. WB: In transfected HEK293 transiently expressing Human CCDC3 (DYKDDDDK tagged) , a band of approx. 36kDa is observed. No bands are observed in mock-transfected HEK293 and the same band is
Formulation	0.5 mg/ml in Tris saline, 0.02% sodium azide, pH7.3 with 0.5% bovine serum albumin. NA
Isotype	IgG
Storage Instruction	Store at -20°C on receipt and minimise freeze-thaw cycles.

TARGET INFORMATION

Gene ID	83643
Gene Symbol	CCDC3
UniProt ID	CCDC3_HUMAN
Immunogen Region	134-148
Immunogen Sequence	PHGVNFDQAIKPTQ

ADDITIONAL INFORMATION

Note STRICTLY FOR FURTHER SCIENTIFIC RESEARCH USE ONLY (RUO). MUST NOT TO BE USED IN DIAGNOSTIC OR THERAPEUTIC APPLICATIONS.



HEK2993 overexpressing Human CCDC3 with C-terminal tag (DYKDDDDK) and probed with anti-DYKDDDDK in the left panel and with STJ72975 (0.5 µg/ml) in the right panel (empty vector transfection in first lanes). Data obtained from Dr. YangXin Fu, Dept Oncology, University of Alberta, Edmonton, Canada.