

Anti-myeloperoxidase antibody (Internal) (STJ72952)

GENERAL INFORMATION

Product Type	Primary antibodies
Applications	Pep-ELISA/WB
Host / Source	Goat
Reactivity	Human

PRODUCT PROPERTIES

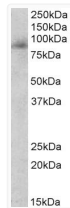
Clonality	Polyclonal
Concentration	0.5 mg/mL
Conjugation	Unconjugated
Purification	Purified from goat serum by ammonium sulphate precipitation followed by antigen affinity chromatography using the immunizing peptide.
Dilution Range	Peptide ELISA: antibody detection limit dilution 1:128000. WB: Approx 85kDa band observed in Human Peripheral Blood Mononucleocytes lysates (calculated MW of 83.9kDa according to NP_000241.1). Recommended concentration: 0.3-1µg/ml.
Formulation	0.5 mg/ml in Tris saline, 0.02% sodium azide, pH7.3 with 0.5% bovine serum albumin. NA
Isotype	IgG
Storage Instruction	Store at -20°C on receipt and minimise freeze-thaw cycles.

TARGET INFORMATION

Gene ID	4353
Gene Symbol	MPO
UniProt ID	PERM_HUMAN
Immunogen Region	Internal
Immunogen Sequence	DKAYKERRESIQK
Specificity	The immunizing peptide represents the N terminus of the mature protein.

ADDITIONAL INFORMATION

Note STRICTLY FOR FURTHER SCIENTIFIC RESEARCH USE ONLY (RUO). MUST NOT TO BE USED IN DIAGNOSTIC OR THERAPEUTIC APPLICATIONS.



STJ72952 (0.3µg/ml) staining of Human Peripheral Blood Lymphocyte lysate (35µg protein in RIPA buffer). Primary incubation was 1 hour. Detected by chemiluminescence.