

Anti-ERK3/MAPK6 antibody (Internal) (STJ72939)

GENERAL INFORMATION

Product Type	Primary antibodies
Applications	Pep-ELISA/WB-Trf/IHC/IP
Host / Source	Goat
Reactivity	Human/Mouse/Rat/Dog/Pig/Cow

PRODUCT PROPERTIES

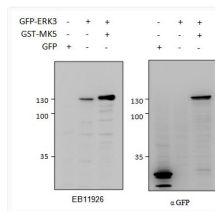
Clonality	Polyclonal
Concentration	0.5 mg/mL
Conjugation	Unconjugated
Purification	Purified from goat serum by ammonium sulphate precipitation followed by antigen affinity chromatography using the immunizing peptide.
Dilution Range	Peptide ELISA: antibody detection limit dilution 1:128000. WB: In transfected HEK293 transiently expressing Mouse ERK3/Mapk6 fused to GFP the band with expected size is intensified when co-expressed with MK5 as the stabilizer for ERK3. No bands a
Formulation	0.5 mg/ml in Tris saline, 0.02% sodium azide, pH7.3 with 0.5% bovine serum albumin. NA
Isotype	IgG
Storage Instruction	Store at -20°C on receipt and minimise freeze-thaw cycles.

TARGET INFORMATION

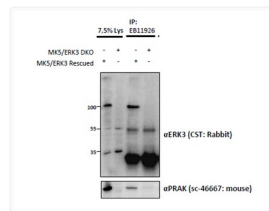
Gene ID	5597
Gene Symbol	MAPK6
UniProt ID	MK06_HUMAN
Immunogen Region	Internal
Immunogen Sequence	HSPVGSPLKSIQ
Specificity	Reported variants represent identical protein (NP_056621.4; NP_081694.1).

ADDITIONAL INFORMATION

Note **STRICTLY FOR FURTHER SCIENTIFIC RESEARCH USE ONLY (RUO). MUST NOT TO BE USED IN DIAGNOSTIC OR THERAPEUTIC APPLICATIONS.**



HEK293 lysate (10ug protein in RIPA buffer) overexpressing GFP-fused Mouse ERK3 probed with STJ72939 (0.5ug/ml) in left panel and with anti-GFP in right panel. GFP-only expression in the first lane. Primary incubations were for 2 hours. Detected by chemiluminescence.



STJ72939 (1.5ug) immunoprecipitation from lysates of MK5/ERK3 double knockout MEFs, with (third lane) and without (fourth lane) rescued MK5/ERK3 expression through retroviral transduction. The corresponding lysates (first and second lane resp.) were analyzed in parallel in this Western blot labelled with rabbit anti-Erk3 (and co-precipitation was measured using mouse anti-MK5/PRAK in the lower panel).