

Anti-betaCstF-64 variant 1/betaCstF-64 variant 3-Mouse antibody (Internal) (STJ72911)

GENERAL INFORMATION

Product Type	Primary antibodies
Applications	Pep-ELISA/IHC/IP
Host / Source	Goat
Reactivity	Mouse

PRODUCT PROPERTIES

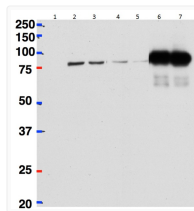
Clonality	Polyclonal
Concentration	0.5 mg/mL
Conjugation	Unconjugated
Purification	Purified from goat serum by ammonium sulphate precipitation followed by antigen affinity chromatography using the immunizing peptide.
Dilution Range	Peptide ELISA: antibody detection limit dilution 1:128000. WB: IP: In transfected HeLa transiently expressing Mouse β Cstf-64 (DYKDDDDK tagged), a band of approx. 80kDa was observed using anti-DYKDDDDK antibody in Western blot after immunoprecipitation.
Formulation	0.5 mg/ml in Tris saline, 0.02% sodium azide, pH7.3 with 0.5% bovine serum albumin. NA
Isotype	IgG
Storage Instruction	Store at -20°C on receipt and minimise freeze-thaw cycles.

TARGET INFORMATION

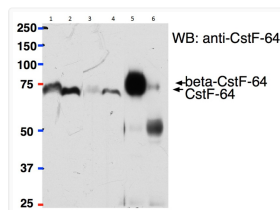
Immunogen Region	Internal
Immunogen Sequence	PASIERVQQQRT
Specificity	This antibody recognizes mouse variants 1 and 3 of the reported beta isoform (ACF05702.1; ACF05700.1).

ADDITIONAL INFORMATION

Note **STRICTLY FOR FURTHER SCIENTIFIC RESEARCH USE ONLY (RUO). MUST NOT TO BE USED IN DIAGNOSTIC OR THERAPEUTIC APPLICATIONS.**



HeLa lysate either in RIPA buffer (lanes 1, 2, 4, 6) or TX100 buffer (lanes 3, 5, 7) overexpressing Mouse β Cstf-64 (DYKDDDDK tagged) immunoprecipitated using STJ72911 (2ug) with Protein G-coated magnetic beads in lanes 6 and 7 and probed with anti-DYKDDDDK (1/1000). Mock-transfected HeLa in Lane 1. A 1/40th part of the lysate was loaded in lanes 2 and 3 before IP and in lanes 4 and 5 after IP. Primary incubations were for 1 hour. Detected by chemiluminescence. Data obtained from Dr P Grozdanov, Texas Tech University Health Sciences Center, USA.



STJ72911 (2ug) used to pull down β Cstf-64 from Mouse Brain (lane 5) lysate (500ug protein) while it cannot pull down Cstf-64 from Mouse Liver (lane 6) lysate (500ug) protein) using Protein G-coated magnetic beads. A 1/40th part of the lysates were loaded in lanes 1 (Brain) and 2 (Liver) before IP and in lanes 3 (Brain) and 4 (Liver) after IP. Western blot probed with mouse anti- β Cstf-64/Cstf-64 antibody and detected by chemiluminescence. Data obtained from Dr P Grozdanov, Texas Tech University Health Sciences Center, USA.