

## Anti-cathepsin C/DPP1 antibody (238-252) (STJ72905)

### GENERAL INFORMATION

Product Type	Primary antibodies
Applications	Pep-ELISA/WB/IHC
Host / Source	Goat
Reactivity	Human

### PRODUCT PROPERTIES

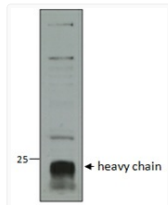
Clonality	Polyclonal
Concentration	0.5 mg/mL
Conjugation	Unconjugated
Purification	Purified from goat serum by ammonium sulphate precipitation followed by antigen affinity chromatography using the immunizing peptide.
Dilution Range	Peptide ELISA: antibody detection limit dilution 1:128000. WB: Approx 24kDa band observed in Human Neutrophils lysates (calculated MW of 51.8kDa according to NP_001805.3). This molecular weight is routinely observed by other sources. Recommended
Formulation	0.5 mg/ml in Tris saline, 0.02% sodium azide, pH7.3 with 0.5% bovine serum albumin. NA
Isotype	IgG
Storage Instruction	Store at -20°C on receipt and minimise freeze-thaw cycles.

### TARGET INFORMATION

Gene ID	<a href="#">1075</a>
Gene Symbol	<a href="#">CTSC</a>
UniProt ID	<a href="#">CATC_HUMAN</a>
Immunogen Region	238-252
Immunogen Sequence	RNVHGINFVSPVRNQ
Specificity	This antibody is expected to recognize isoform a (NP_001805.3) only.

### ADDITIONAL INFORMATION

Note STRICTLY FOR FURTHER SCIENTIFIC RESEARCH USE ONLY (RUO). MUST NOT TO BE USED IN DIAGNOSTIC OR THERAPEUTIC APPLICATIONS.



STJ72905 (1µg/ml) staining of Human Neutrophils lysate (35µg protein in RIPA buffer). Data obtained from a customer. Detected by chemiluminescence.