

Anti-Alpha-synuclein antibody (Internal) (STJ72875)

GENERAL INFORMATION

Product Type	Primary antibodies
Applications	Pep-ELISA/WB/IHC
Host / Source	Goat
Reactivity	Human/Mouse/Rat/Dog/Pig

PRODUCT PROPERTIES

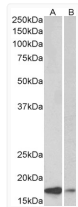
Clonality	Polyclonal
Concentration	0.5 mg/mL
Conjugation	Unconjugated
Purification	Purified from goat serum by ammonium sulphate precipitation followed by antigen affinity chromatography using the immunizing peptide.
Dilution Range	Peptide ELISA: antibody detection limit dilution 1:128000. WB: Approx 17kDa band observed in Human Brain (Amygdala) and fetal Mouse Brain lysates (calculated MW of 14.5kDa according to Human NP_000336.1 and Mouse NP_033247.1). This molecular weight
Formulation	0.5 mg/ml in Tris saline, 0.02% sodium azide, pH7.3 with 0.5% bovine serum albumin. NA
Isotype	IgG
Storage Instruction	Store at -20°C on receipt and minimise freeze-thaw cycles.

TARGET INFORMATION

Gene ID	6622
Gene Symbol	SNCA
UniProt ID	SYUA_HUMAN
Immunogen Region	Internal
Immunogen Sequence	ATGFVKKDKLQK
Specificity	This antibody is expected to recognize both reported isoforms (NP_009292.1; NP_000336.1). Reported variants represent identical protein: NP_000336.1, NP_001139527.1, NP_001139526.1

ADDITIONAL INFORMATION

Note STRICTLY FOR FURTHER SCIENTIFIC RESEARCH USE ONLY (RUO). MUST NOT TO BE USED IN DIAGNOSTIC OR THERAPEUTIC APPLICATIONS.



STJ72875 (0.1 µg/ml) staining of Human Amygdala (A) and fetal Mouse (B) Brain lysate (35 µg protein in RIPA buffer). Detected by chemiluminescence.