

Anti-GLP1R antibody (Internal) (STJ72860)

GENERAL INFORMATION

Product Type	Primary antibodies
Applications	Pep-ELISA/WB/IF/FC
Host / Source	Goat
Reactivity	Human/Mouse/Rat/Dog/Pig/Cow

PRODUCT PROPERTIES

Clonality	Polyclonal
Concentration	0.5 mg/mL
Conjugation	Unconjugated
Purification	Purified from goat serum by ammonium sulphate precipitation followed by antigen affinity chromatography using the immunizing peptide.
Dilution Range	Peptide ELISA: antibody detection limit dilution 1:128000. WB: Approx 55kDa band observed in Human Hippocampus and in Rat and Pig Brain lysates (calculated MW of 53.0kDa according to Human NP_002053.3, 52.9kDa according to Rat NP_036860.1 and 52.
Formulation	0.5 mg/ml in Tris saline, 0.02% sodium azide, pH7.3 with 0.5% bovine serum albumin. NA
Isotype	IgG
Storage Instruction	Store at -20°C on receipt and minimise freeze-thaw cycles.

TARGET INFORMATION

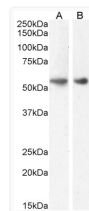
Gene ID	2740
Gene Symbol	GLP1R
UniProt ID	GLP1R_HUMAN
Immunogen Region	Internal
Immunogen Sequence	QHQWDGLLSYQD
Specificity	The immunizing peptide represents part of an extracellular region.

ADDITIONAL INFORMATION

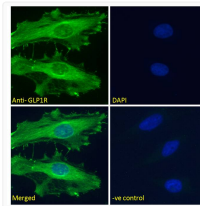
Note STRICTLY FOR FURTHER SCIENTIFIC RESEARCH USE ONLY (RUO). MUST NOT TO BE USED IN DIAGNOSTIC OR THERAPEUTIC APPLICATIONS.



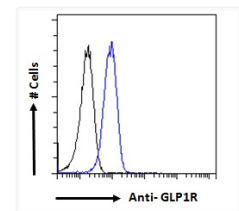
STJ72860 (1µg/ml) staining of Human Hippocampus lysate (35µg protein in RIPA buffer). Detected by chemiluminescence.



STJ72860 (1µg/ml) staining of Rat (A) and (0.1µg/ml) Pig (B) Brain lysate (35µg protein in RIPA buffer). Detected by chemiluminescence.



STJ72860 Immunofluorescence analysis of paraformaldehyde fixed HeLa cells, permeabilized with 0.15% Triton. Primary incubation 1hr (10µg/ml) followed by Alexa Fluor 488 secondary antibody (2µg/ml), showing membrane staining. The nuclear stain is DAPI (blue). Negative control: Unimmunized goat IgG (10µg/ml) followed by Alexa Fluor 488 secondary antibody (2µg/ml).



STJ72860 Flow cytometric analysis of paraformaldehyde fixed HeLa cells (blue line), permeabilized with 0.5% Triton. Primary incubation 1hr (10µg/ml) followed by Alexa Fluor 488 secondary antibody (1µg/ml). IgG control: Unimmunized goat IgG (10µg/ml) followed by Alexa Fluor 488 secondary antibody.