

Anti-Ubinuclein 1/ubinnuclein 2 antibody (Internal) (STJ72829)

GENERAL INFORMATION

Product Type	Primary antibodies
Applications	Pep-ELISA/WB
Host / Source	Goat
Reactivity	Human/Mouse/Rat/Dog/Pig/Cow/Zebrafish

PRODUCT PROPERTIES

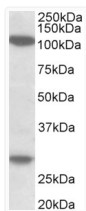
Clonality	Polyclonal
Concentration	0.5 mg/mL
Conjugation	Unconjugated
Purification	Purified from goat serum by ammonium sulphate precipitation followed by antigen affinity chromatography using the immunizing peptide.
Dilution Range	Peptide ELISA: antibody detection limit dilution 1:128000. WB: Approx 120kDa band observed in lysates of cell line MOLT4 (calculated MW of 122kDa according to NP_058632.2). Recommended concentration: 1-3µg/ml. An additional band of unknown identity is observed.
Formulation	0.5 mg/ml in Tris saline, 0.02% sodium azide, pH7.3 with 0.5% bovine serum albumin. NA
Isotype	IgG
Storage Instruction	Store at -20°C on receipt and minimise freeze-thaw cycles.

TARGET INFORMATION

Gene ID	29855
Gene Symbol	UBN1
UniProt ID	UBN1_HUMAN
Immunogen Region	Internal
Immunogen Sequence	DNSEAYDELVPASLT
Specificity	Reported variants represent identical protein: NP_058632.2, NP_001072982.1.

ADDITIONAL INFORMATION

Note STRICTLY FOR FURTHER SCIENTIFIC RESEARCH USE ONLY (RUO). MUST NOT TO BE USED IN DIAGNOSTIC OR THERAPEUTIC APPLICATIONS.



STJ72829 (1µg/ml) staining of MOLT4 lysate (35µg protein in RIPA buffer). Primary incubation was 1 hour. Detected by chemiluminescence.