

## Anti-PRKCB antibody (Internal) (STJ72823)

### GENERAL INFORMATION

Product Type	Primary antibodies
Applications	Pep-ELISA/WB/IHC
Host / Source	Goat
Reactivity	Human/Rat/Dog

### PRODUCT PROPERTIES

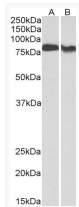
Clonality	Polyclonal
Concentration	0.5 mg/mL
Conjugation	Unconjugated
Purification	Purified from goat serum by ammonium sulphate precipitation followed by antigen affinity chromatography using the immunizing peptide.
Dilution Range	Peptide ELISA: antibody detection limit dilution 1:128000. WB: Approx 80kDa band observed in lysates of Human Placenta and Rat Brain (calculated MW of 76.9kDa according to NP_997700.1). Recommended concentration: 0.1-0.3µg/ml. IHC: In paraffi
Formulation	0.5 mg/ml in Tris saline, 0.02% sodium azide, pH7.3 with 0.5% bovine serum albumin. NA
Isotype	IgG
Storage Instruction	Store at -20°C on receipt and minimise freeze-thaw cycles.

### TARGET INFORMATION

Gene ID	<a href="#">5579</a>
Gene Symbol	<a href="#">PRKCB</a>
UniProt ID	<a href="#">KPCB_HUMAN</a>
Immunogen Region	Internal
Immunogen Sequence	DKEFTRQPVELT
Specificity	This antibody is expected to recognize isoform 1 (NP_997700.1) only.

### ADDITIONAL INFORMATION

Note STRICTLY FOR FURTHER SCIENTIFIC RESEARCH USE ONLY (RUO). MUST NOT TO BE USED IN DIAGNOSTIC OR THERAPEUTIC APPLICATIONS.



STJ72823 (0.3µg/ml) staining of Human Placenta (A) and Rat Brain (B) lysates (35µg protein in RIPA buffer). Primary incubation was 1 hour. Detected by chemiluminescence.