

Anti-PRMT7 antibody (Internal) (STJ72815)

GENERAL INFORMATION

Product Type	Primary antibodies
Applications	Pep-ELISA/WB
Host / Source	Goat
Reactivity	Human/Mouse/Rat/Dog

PRODUCT PROPERTIES

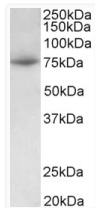
Clonality	Polyclonal
Concentration	0.5 mg/mL
Conjugation	Unconjugated
Purification	Purified from goat serum by ammonium sulphate precipitation followed by antigen affinity chromatography using the immunizing peptide.
Dilution Range	Peptide ELISA: antibody detection limit dilution 1:128000. WB: Approx 75kDa band observed in lysates of cell line HeLa and of Mouse Spleen (calculated MW of 78.5kDa according to Human NP_061896.1 and 78.3kDa according to Mouse NP_663379.1). Recom
Formulation	0.5 mg/ml in Tris saline, 0.02% sodium azide, pH7.3 with 0.5% bovine serum albumin. NA
Isotype	IgG
Storage Instruction	Store at -20°C on receipt and minimise freeze-thaw cycles.

TARGET INFORMATION

Gene ID	54496
Gene Symbol	PRMT7
UniProt ID	ANM7_HUMAN
Immunogen Region	Internal
Immunogen Sequence	PRFGEINDQDRDTR
Specificity	This antibody is expected to recognize both reported isoforms (NP_061896.1; NP_001171753.1).

ADDITIONAL INFORMATION

Note STRICTLY FOR FURTHER SCIENTIFIC RESEARCH USE ONLY (RUO). MUST NOT TO BE USED IN DIAGNOSTIC OR THERAPEUTIC APPLICATIONS.



STJ72815 (0.3 µg/ml) staining of HeLa lysate (35 µg protein in RIPA buffer). Primary incubation was 1 hour. Detected by chemiluminescence.