

## Anti-PRMT3 antibody (468-421) (STJ72812)

### GENERAL INFORMATION

Product Type	Primary antibodies
Applications	Pep-ELISA/WB
Host / Source	Goat
Reactivity	Human

### PRODUCT PROPERTIES

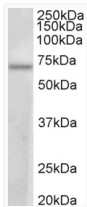
Clonality	Polyclonal
Concentration	0.5 mg/mL
Conjugation	Unconjugated
Purification	Purified from goat serum by ammonium sulphate precipitation followed by antigen affinity chromatography using the immunizing peptide.
Dilution Range	Peptide ELISA: antibody detection limit dilution 1:16000. WB: Approx 70kDa band observed in lysates of cell line MCF7 (calculated MW of 59.9kDa according to NP_005779.1). The observed molecular weight corresponds to earlier findings in literature
Formulation	0.5 mg/ml in Tris saline, 0.02% sodium azide, pH7.3 with 0.5% bovine serum albumin. NA
Isotype	IgG
Storage Instruction	Store at -20°C on receipt and minimise freeze-thaw cycles.

### TARGET INFORMATION

Gene ID	<a href="#">10196</a>
Gene Symbol	<a href="#">PRMT3</a>
UniProt ID	<a href="#">ANM3_HUMAN</a>
Immunogen Region	468-421
Immunogen Sequence	DPKTLISEPCGIKH
Specificity	This antibody is expected to recognize all reported isoforms (NP_005779.1; NP_001138638.1; NP_001138639.1).

### ADDITIONAL INFORMATION

Note STRICTLY FOR FURTHER SCIENTIFIC RESEARCH USE ONLY (RUO). MUST NOT TO BE USED IN DIAGNOSTIC OR THERAPEUTIC APPLICATIONS.



STJ72812 (1 µg/ml) staining of MCF7 lysate (35 µg protein in RIPA buffer). Primary incubation was 1 hour. Detected by chemiluminescence.