

Anti-RIF1 antibody (C-Term) (STJ72805)

GENERAL INFORMATION

Product Type	Primary antibodies
Applications	Pep-ELISA/IF
Host / Source	Goat
Reactivity	Human/Mouse/Dog/Pig/Cow

PRODUCT PROPERTIES

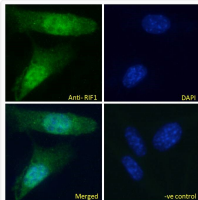
Clonality	Polyclonal
Concentration	0.5 mg/mL
Conjugation	Unconjugated
Purification	Purified from goat serum by ammonium sulphate precipitation followed by antigen affinity chromatography using the immunizing peptide.
Dilution Range	Peptide ELISA: antibody detection limit dilution 1:128000. IF: Expression of the protein seen in the nucleus of NIH3T3, HEK293 and U2OS cells. Recommended concentration: 10µg/ml.
Formulation	0.5 mg/ml in Tris saline, 0.02% sodium azide, pH7.3 with 0.5% bovine serum albumin. NA
Isotype	IgG
Storage Instruction	Store at -20°C on receipt and minimise freeze-thaw cycles.

TARGET INFORMATION

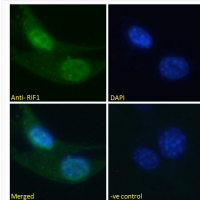
Gene ID	55183
Gene Symbol	RIF1
UniProt ID	RIF1_HUMAN
Immunogen Region	C-Term
Immunogen Sequence	RNLQSRWRSPSHEN
Specificity	This antibody is expected to recognize both reported isoforms (NP_060621.3; NP_001171134.1). The immunizing peptide sequence has been optimised for cross-reactivity in mouse. Reported variants represent identical protein: NP_001171135.1, NP_001171136.

ADDITIONAL INFORMATION

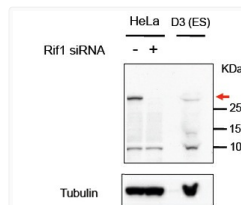
Note STRICTLY FOR FURTHER SCIENTIFIC RESEARCH USE ONLY (RUO). MUST NOT TO BE USED IN DIAGNOSTIC OR THERAPEUTIC APPLICATIONS.



STJ72805 Immunofluorescence analysis of paraformaldehyde fixed NIH3T3 cells, permeabilized with 0.15% Triton. Primary incubation 1hr (10ug/ml) followed by Alexa Fluor 488 secondary antibody (2ug/ml), showing nuclear staining. The nuclear stain is DAPI (blue). NA NA NA Negative control: Unimmunized goat IgG (10ug/ml) followed by Alexa Fluor 488 secondary antibody (2ug/ml).



STJ72805 Immunofluorescence analysis of paraformaldehyde fixed U2OS cells, permeabilized with 0.15% Triton. Primary incubation 1hr (10ug/ml) followed by Alexa Fluor 488 secondary antibody (2ug/ml), showing nuclear staining. The nuclear stain is DAPI (blue). NA NA NA Negative control: Unimmunized goat IgG (10ug/ml) followed by Alexa Fluor 488 secondary antibody (2ug/ml).



STJ72805 (1µg/ml) staining of HeLa and Mouse D3 (ES) lysates (35µg protein in RIPA buffer). Data obtained from Hisao Masai, Tokyo Metropolitan Institute of Medical Science, Japan. Primary incubation was 1 hour. Detected by chemiluminescence. This data is from a previous batch, not on sale.