

Anti-AIMP1/SCYE1 antibody (137-149) (STJ72797)

GENERAL INFORMATION

Product Type	Primary antibodies
Applications	Pep-ELISA/WB/IHC
Host / Source	Goat
Reactivity	Human/Dog/Pig

PRODUCT PROPERTIES

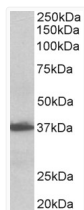
Clonality	Polyclonal
Concentration	0.5 mg/mL
Conjugation	Unconjugated
Purification	Purified from goat serum by ammonium sulphate precipitation followed by antigen affinity chromatography using the immunizing peptide.
Dilution Range	Peptide ELISA: antibody detection limit dilution 1:32000. WB: Approx 37kDa band observed in Human Lymph Node and Uterus lysates (calculated MW of 37.0kDa according to NP_001135887.1). Recommended concentration: 0.1-0.3µg/ml. IHC: In paraffin
Formulation	0.5 mg/ml in Tris saline, 0.02% sodium azide, pH7.3 with 0.5% bovine serum albumin. NA
Isotype	IgG
Storage Instruction	Store at -20°C on receipt and minimise freeze-thaw cycles.

TARGET INFORMATION

Gene ID	9255
Gene Symbol	AIMP1
UniProt ID	AIMP1_HUMAN
Immunogen Region	137-149
Immunogen Sequence	KQQSIAGSADSKP
Specificity	This antibody is expected to recognize both reported isoforms (NP_004748.2; NP_001135888.1). Reported variants represent identical protein: NP_004748.2, NP_001135887.1

ADDITIONAL INFORMATION

Note STRICTLY FOR FURTHER SCIENTIFIC RESEARCH USE ONLY (RUO). MUST NOT TO BE USED IN DIAGNOSTIC OR THERAPEUTIC APPLICATIONS.



STJ72797 (0.1 µg/ml) staining of Human Lymph Node lysate (35 µg protein in RIPA buffer). Primary incubation was 1 hour. Detected by chemiluminescence.