

Anti-BPIFA1/PLUNC antibody (C-Term) (STJ72783)

GENERAL INFORMATION

Product Type	Primary antibodies
Applications	Pep-ELISA/WB
Host / Source	Goat
Reactivity	Human

PRODUCT PROPERTIES

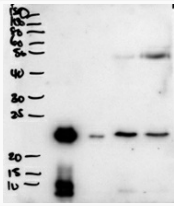
Clonality	Polyclonal
Concentration	0.5 mg/mL
Conjugation	Unconjugated
Purification	Purified from goat serum by ammonium sulphate precipitation followed by antigen affinity chromatography using the immunizing peptide.
Dilution Range	Peptide ELISA: antibody detection limit dilution 1:64000. WB: Approx 26kDa band observed in secretions of Human primary airway cells in culture-and in Human Bronchoalveolar Lavage fluid (calculated MW of 26.7kDa according to NP_057667.1). Recomme
Formulation	0.5 mg/ml in Tris saline, 0.02% sodium azide, pH7.3 with 0.5% bovine serum albumin. NA
Isotype	IgG
Storage Instruction	Store at -20°C on receipt and minimise freeze-thaw cycles.

TARGET INFORMATION

Gene ID	51297
Gene Symbol	BPIFA1
UniProt ID	BPIA1_HUMAN
Immunogen Region	C-Term
Immunogen Sequence	NEVLRGLDITLVHD
Specificity	Reported variants represent identical protein: NP_057667.1, NP_001230122.1, NP_570913.1

ADDITIONAL INFORMATION

Note STRICTLY FOR FURTHER SCIENTIFIC RESEARCH USE ONLY (RUO). MUST NOT TO BE USED IN DIAGNOSTIC OR THERAPEUTIC APPLICATIONS.



STJ72783 (2µg/ml) staining of secretions from Human primary airway cells in culture (lanes 1 and 2) , and in Human Bronchoalveolar Lavage fluid (lanes 3 and 4). Data obtained from Dr. C Bingle, AURM, University of Sheffield, UK. Primary incubation was 1 hour. Detected by chemiluminescence.