

Anti-Gelsolin-Isoform a antibody (N-Term) (STJ72773)

GENERAL INFORMATION

Product Type	Primary antibodies
Applications	Pep-ELISA/WB
Host / Source	Goat
Reactivity	Human

PRODUCT PROPERTIES

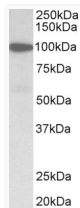
Clonality	Polyclonal
Concentration	0.5 mg/mL
Conjugation	Unconjugated
Purification	Purified from goat serum by ammonium sulphate precipitation followed by antigen affinity chromatography using the immunizing peptide.
Dilution Range	Peptide ELISA: antibody detection limit dilution 1:64000. WB: Approx 100kDa band observed in Human Colon, Duodenum, Heart and Skeletal Muscle lysates (calculated MW of 85.7kDa according to NP_000168.1). Recommended concentration: 1-3µg/ml. Primar
Formulation	0.5 mg/ml in Tris saline, 0.02% sodium azide, pH7.3 with 0.5% bovine serum albumin. NA
Isotype	IgG
Storage Instruction	Store at -20°C on receipt and minimise freeze-thaw cycles.

TARGET INFORMATION

Gene ID	2934
Gene Symbol	GSN
UniProt ID	GELS_HUMAN
Immunogen Region	N-Term
Immunogen Sequence	PQGRVPEARPNS
Specificity	This antibody is expected to recognize isoform a (NP_000168.1) only. Reported variants represent identical protein: NP_001121138.1, NP_001121139.1 Reported variants represent identical protein: NP_001121135.1, NP_937895.1, NP_001121134.1, NP_001121113

ADDITIONAL INFORMATION

Note STRICTLY FOR FURTHER SCIENTIFIC RESEARCH USE ONLY (RUO). MUST NOT TO BE USED IN DIAGNOSTIC OR THERAPEUTIC APPLICATIONS.



STJ72773 (1µg/ml) staining of Human Duodenum lysate (35µg protein in RIPA buffer). Primary incubation was 1 hour. Detected by chemiluminescence.