

## Anti-RRAD antibody (36-48) (STJ72757)

### GENERAL INFORMATION

Product Type	Primary antibodies
Applications	Pep-ELISA/WB
Host / Source	Goat
Reactivity	Human/Mouse/Rat/Dog/Pig/Cow

### PRODUCT PROPERTIES

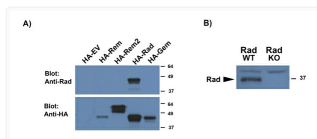
Clonality	Polyclonal
Concentration	0.5 mg/mL
Conjugation	Unconjugated
Purification	Purified from goat serum by ammonium sulphate precipitation followed by antigen affinity chromatography using the immunizing peptide.
Dilution Range	Peptide ELISA: antibody detection limit dilution 1:64000. WB: Approx 37kDa band observed in Mouse Heart lysates and no 37kDa in the KO lysates (calculated MW of 33.2kDa according to mouse NP_062636.2 and human NP_004156.1). There is some non-spec
Formulation	0.5 mg/ml in Tris saline, 0.02% sodium azide, pH7.3 with 0.5% bovine serum albumin. NA
Isotype	IgG
Storage Instruction	Store at -20°C on receipt and minimise freeze-thaw cycles.

### TARGET INFORMATION

Gene ID	<a href="#">6236</a>
Gene Symbol	<a href="#">RRAD</a>
UniProt ID	<a href="#">RAD_HUMAN</a>
Immunogen Region	36-48
Immunogen Sequence	HRRSMPVDERDLQ
Specificity	Reported variants represent identical protein: NP_004156.1, NP_001122322.1

### ADDITIONAL INFORMATION

Note STRICTLY FOR FURTHER SCIENTIFIC RESEARCH USE ONLY (RUO). MUST NOT TO BE USED IN DIAGNOSTIC OR THERAPEUTIC APPLICATIONS.



A) : STJ72757 (0.5 µg/ml) staining of HEK293 lysates overexpressing several HA-tagged Mouse GTPases, including Rrad (10 µg protein in RIPA buffer) and compared with an HA-specific antibody. B) : STJ72757 (0.5 µg/ml) staining of WT and KO lysates of Mouse Heart (100 µg protein in RIPA buffer). Primary incubation was 1 hour. Detected by chemiluminescence.