

Anti-STAT5A antibody (681-692) (STJ72749)

GENERAL INFORMATION

Product Type	Primary antibodies
Applications	Pep-ELISA/WB/IHC/FC
Host / Source	Goat
Reactivity	Human/Mouse/Rat/Dog/Cow

PRODUCT PROPERTIES

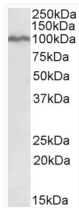
Clonality	Polyclonal
Concentration	0.5 mg/mL
Conjugation	Unconjugated
Purification	Purified from goat serum by ammonium sulphate precipitation followed by antigen affinity chromatography using the immunizing peptide.
Dilution Range	Peptide ELISA: antibody detection limit dilution 1:8000. WB: Approx 100kDa band observed in lysates of cell line K562 (calculated MW of 90.6kDa according to NP_003143.2). Recommended concentration: 0.1-0.3µg/ml. Primary incubation 1 hour at room
Formulation	0.5 mg/ml in Tris saline, 0.02% sodium azide, pH7.3 with 0.5% bovine serum albumin. NA
Isotype	IgG
Storage Instruction	Store at -20°C on receipt and minimise freeze-thaw cycles.

TARGET INFORMATION

Gene ID	6776
Gene Symbol	STAT5A
UniProt ID	STA5A_HUMAN
Immunogen Region	681-692
Immunogen Sequence	KYYTPVLAKAVD
Specificity	This antibody is not expected to cross-react with STAT5B.

ADDITIONAL INFORMATION

Note STRICTLY FOR FURTHER SCIENTIFIC RESEARCH USE ONLY (RUO). MUST NOT TO BE USED IN DIAGNOSTIC OR THERAPEUTIC APPLICATIONS.



STJ72749 (0.1 µg/ml) staining of K562 lysate (35 µg protein in RIPA buffer). Primary incubation was 1 hour. Detected by chemiluminescence.