

Anti-SFTPA1/SFTPA2 antibody (102-115) (STJ72743)

GENERAL INFORMATION

Product Type	Primary antibodies
Applications	Pep-ELISA/WB/IHC
Host / Source	Goat
Reactivity	Human/Cow

PRODUCT PROPERTIES

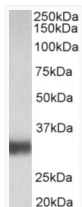
Clonality	Polyclonal
Concentration	0.5 mg/mL
Conjugation	Unconjugated
Purification	Purified from goat serum by ammonium sulphate precipitation followed by antigen affinity chromatography using the immunizing peptide.
Dilution Range	Peptide ELISA: antibody detection limit dilution 1:32000. WB: Approx 30kDa band observed in Human Lung lysates (calculated MW of 27.7kDa according to NP_001087239.2). Recommended concentration: 0.01-0.03µg/ml. IHC: Paraffin embedded Human Lung
Formulation	0.5 mg/ml in Tris saline, 0.02% sodium azide, pH7.3 with 0.5% bovine serum albumin. NA
Isotype	IgG
Storage Instruction	Store at -20°C on receipt and minimise freeze-thaw cycles.

TARGET INFORMATION

Gene ID	653509
Gene Symbol	SFTPA1
UniProt ID	SFTA1_HUMAN
Immunogen Region	102-115
Immunogen Sequence	HLDEELQATLHDFR
Specificity	This antibody is expected to recognize all the reported isoforms of A1 (NP_005402.3; NP_001087239.2; NP_001158117.1; NP_001158118.1) and A2 (NP_001092138.1), Reported variants represent identical protein: NP_001158116.1, NP_005402.3, NP_001158119.1

ADDITIONAL INFORMATION

Note STRICTLY FOR FURTHER SCIENTIFIC RESEARCH USE ONLY (RUO). MUST NOT TO BE USED IN DIAGNOSTIC OR THERAPEUTIC APPLICATIONS.



STJ72743 (0.01µg/ml) staining of Human Lung lysate (35µg protein in RIPA buffer). Primary incubation was 1 hour. Detected by chemiluminescence.