

Anti-ARPC1A antibody (C-Term) (STJ72737)

GENERAL INFORMATION

Product Type	Primary antibodies
Applications	Pep-ELISA/WB/IHC
Host / Source	Goat
Reactivity	Human/Mouse/Rat/Pig/Cow

PRODUCT PROPERTIES

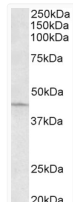
Clonality	Polyclonal
Concentration	0.5 mg/mL
Conjugation	Unconjugated
Purification	Purified from goat serum by ammonium sulphate precipitation followed by antigen affinity chromatography using the immunizing peptide.
Dilution Range	Peptide ELISA: antibody detection limit dilution 1:64000. WB: Approx 45kDa band observed in lysates of cell line HeLa (calculated MW of 41.6kDa according to NP_006400.2). Approx 37kDa band observed in fetal Mouse Brain and adult Rat Brain lysates
Formulation	0.5 mg/ml in Tris saline, 0.02% sodium azide, pH7.3 with 0.5% bovine serum albumin. NA
Isotype	IgG
Storage Instruction	Store at -20°C on receipt and minimise freeze-thaw cycles.

TARGET INFORMATION

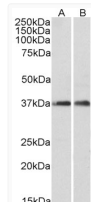
Gene ID	10552
Gene Symbol	ARPC1A
UniProt ID	ARC1A_HUMAN
Immunogen Region	C-Term
Immunogen Sequence	DFKTLESSIQGLR
Specificity	This antibody is expected to recognize both reported isoforms (NP_006400.2; NP_001177925.1). No cross-reactivity expected with ARPC1B.

ADDITIONAL INFORMATION

Note **STRICTLY FOR FURTHER SCIENTIFIC RESEARCH USE ONLY (RUO). MUST NOT TO BE USED IN DIAGNOSTIC OR THERAPEUTIC APPLICATIONS.**



STJ72737 (0.3 µg/ml) staining of HeLa lysate (35 µg protein in RIPA buffer). Primary incubation was 1 hour. Detected by chemiluminescence.



STJ72737 (0.1 µg/ml) staining of fetal Mouse Brain (A) and adult Rat Brain (B) lysates (35 µg protein in RIPA buffer). Primary incubation was 1 hour. Detected by chemiluminescence.