

Anti-TRIM11 antibody (249-263) (STJ72723)

GENERAL INFORMATION

Product Type	Primary antibodies
Applications	Pep-ELISA/WB/IHC
Host / Source	Goat
Reactivity	Human/Pig/Cow

PRODUCT PROPERTIES

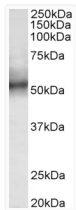
Clonality	Polyclonal
Concentration	0.5 mg/mL
Conjugation	Unconjugated
Purification	Purified from goat serum by ammonium sulphate precipitation followed by antigen affinity chromatography using the immunizing peptide.
Dilution Range	Peptide ELISA: antibody detection limit dilution 1:32000. WB: Approx 52kDa band observed in Human Spleen lysates (calculated MW of 52.8kDa according to NP_660215.1). Recommended concentration: 0.3-1µg/ml. Primary incubation was 1 hour. IHC: P
Formulation	0.5 mg/ml in Tris saline, 0.02% sodium azide, pH7.3 with 0.5% bovine serum albumin. NA
Isotype	IgG
Storage Instruction	Store at -20°C on receipt and minimise freeze-thaw cycles.

TARGET INFORMATION

Gene ID	81559
Gene Symbol	TRIM11
UniProt ID	TRIM11_HUMAN
Immunogen Region	249-263
Immunogen Sequence	DALRRVQDVKLPPE

ADDITIONAL INFORMATION

Note STRICTLY FOR FURTHER SCIENTIFIC RESEARCH USE ONLY (RUO). MUST NOT TO BE USED IN DIAGNOSTIC OR THERAPEUTIC APPLICATIONS.



STJ72723 (0.3µg/ml) staining of Human Spleen lysate (35µg protein in RIPA buffer). Detected by chemiluminescence.