

## Anti-HP beta chain antibody (Internal) (STJ72693)

### GENERAL INFORMATION

Product Type	Primary antibodies
Applications	Pep-ELISA/WB
Host / Source	Goat
Reactivity	Human/Dog/Pig

### PRODUCT PROPERTIES

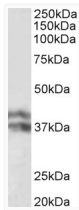
Clonality	Polyclonal
Concentration	0.5 mg/mL
Conjugation	Unconjugated
Purification	Purified from goat serum by ammonium sulphate precipitation followed by antigen affinity chromatography using the immunizing peptide.
Dilution Range	Peptide ELISA: antibody detection limit dilution 1:8000. WB: Approx 37+40kDa bands observed in Human Liver lysates and 40kDa in Pig Liver lysates (calculated MW of 45.2kDa according to NP_005134.1 and 38.5kDa according to NP_001119574.1). Recomme
Formulation	0.5 mg/ml in Tris saline, 0.02% sodium azide, pH7.3 with 0.5% bovine serum albumin. NA
Isotype	IgG
Storage Instruction	Store at -20°C on receipt and minimise freeze-thaw cycles.

### TARGET INFORMATION

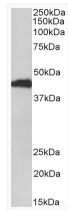
Gene ID	<a href="#">3240</a>
Gene Symbol	<a href="#">HP</a>
UniProt ID	<a href="#">HPT_HUMAN</a>
Immunogen Region	Internal
Immunogen Sequence	STVPEKTPKSP
Specificity	This antibody is expected to recognize both reported isoforms (NP_005134.1; NP_001119574.1).

### ADDITIONAL INFORMATION

Note **STRICTLY FOR FURTHER SCIENTIFIC RESEARCH USE ONLY (RUO). MUST NOT TO BE USED IN DIAGNOSTIC OR THERAPEUTIC APPLICATIONS.**



STJ72693 (0.1 µg/ml) staining of Human Liver lysate (35 µg protein in RIPA buffer). Primary incubation was 1 hour. Detected by chemiluminescence.



STJ72693 (1 µg/ml) staining of Pig Liver lysate (35 µg protein in RIPA buffer). Primary incubation was 1 hour. Detected by chemiluminescence.