

## Anti-PRODH antibody (112-134) (STJ72670)

### GENERAL INFORMATION

Product Type	Primary antibodies
Applications	Pep-ELISA/WB
Host / Source	Goat
Reactivity	Human

### PRODUCT PROPERTIES

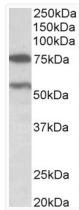
Clonality	Polyclonal
Concentration	0.5 mg/mL
Conjugation	Unconjugated
Purification	Purified from goat serum by ammonium sulphate precipitation followed by antigen affinity chromatography using the immunizing peptide.
Dilution Range	Peptide ELISA: antibody detection limit dilution 1:16000. WB: Approx 75+55kDa bands observed in Human Brain (Cerebellum and Substantia nigra) lysates (calculated MW of 68.0kDa according to NP_057419.4 and of 56.2kDa according to NP_001182155.1)
Formulation	0.5 mg/ml in Tris saline, 0.02% sodium azide, pH7.3 with 0.5% bovine serum albumin. NA
Isotype	IgG
Storage Instruction	Store at -20°C on receipt and minimise freeze-thaw cycles.

### TARGET INFORMATION

Gene ID	<a href="#">5625</a>
Gene Symbol	<a href="#">PRODH</a>
UniProt ID	<a href="#">PROD_HUMAN</a>
Immunogen Region	112-134
Immunogen Sequence	EDQESIQLLRHYR
Specificity	This antibody is expected to recognize both reported isoforms (NP_057419.4; NP_001182155.1).

### ADDITIONAL INFORMATION

Note STRICTLY FOR FURTHER SCIENTIFIC RESEARCH USE ONLY (RUO). MUST NOT TO BE USED IN DIAGNOSTIC OR THERAPEUTIC APPLICATIONS.



STJ72670 (0.3 µg/ml) staining of Human Cerebellum lysate (35 µg protein in RIPA buffer). Primary incubation was 1 hour. Detected by chemiluminescence.