

Anti-TSHR antibody (101-115) (STJ72663)

GENERAL INFORMATION

Product Type	Primary antibodies
Applications	Pep-ELISA/WB
Host / Source	Goat
Reactivity	Human/Cow

PRODUCT PROPERTIES

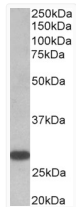
Clonality	Polyclonal
Concentration	0.5 mg/mL
Conjugation	Unconjugated
Purification	Purified from goat serum by ammonium sulphate precipitation followed by antigen affinity chromatography using the immunizing peptide.
Dilution Range	Peptide ELISA: antibody detection limit dilution 1:16000. WB: Approx 28kDa band observed in Human Thyroid Gland lysates (calculated MW of 28.4kDa according to NP_001018046.1). Recommended concentration: 0.5-2µg/ml.
Formulation	0.5 mg/ml in Tris saline, 0.02% sodium azide, pH7.3 with 0.5% bovine serum albumin. NA
Isotype	IgG
Storage Instruction	Store at -20°C on receipt and minimise freeze-thaw cycles.

TARGET INFORMATION

Gene ID	7253
Gene Symbol	TSHR
UniProt ID	TSHR_HUMAN
Immunogen Region	101-115
Immunogen Sequence	SKVTHIEIRNTRNLT
Specificity	This antibody is expected to recognize reported isoform 1 (NP_000360.2) and isoform 2 (NP_001018046.1). The immunizing peptide sequence corresponds to a part of the extracellular domain.

ADDITIONAL INFORMATION

Note STRICTLY FOR FURTHER SCIENTIFIC RESEARCH USE ONLY (RUO). MUST NOT TO BE USED IN DIAGNOSTIC OR THERAPEUTIC APPLICATIONS.



STJ72663 (0.5µg/ml) staining of Human Thyroid gland lysate (35µg protein in RIPA buffer). Primary incubation was 1 hour. Detected by chemiluminescence.