

Anti-SRCAP antibody (309-322) (STJ72650)

GENERAL INFORMATION

Product Type	Primary antibodies
Applications	Pep-ELISA/IHC
Host / Source	Goat
Reactivity	Human/Mouse/Rat/Dog/Pig

PRODUCT PROPERTIES

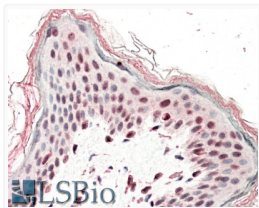
Clonality	Polyclonal
Concentration	0.5 mg/mL
Conjugation	Unconjugated
Purification	Purified from goat serum by ammonium sulphate precipitation followed by antigen affinity chromatography using the immunizing peptide.
Dilution Range	Peptide ELISA: antibody detection limit dilution 1:128000. IHC: In paraffin embedded Human Skin shows nuclear staining in some keratinocytes. Recommended concentration: 5-10µg/ml.
Formulation	0.5 mg/ml in Tris saline, 0.02% sodium azide, pH7.3 with 0.5% bovine serum albumin. NA
Isotype	IgG
Storage Instruction	Store at -20°C on receipt and minimise freeze-thaw cycles.

TARGET INFORMATION

Gene ID	10847
Gene Symbol	SRCAP
UniProt ID	SRCAP_HUMAN
Immunogen Region	309-322
Immunogen Sequence	QEGNDAEQRREIE

ADDITIONAL INFORMATION

Note STRICTLY FOR FURTHER SCIENTIFIC RESEARCH USE ONLY (RUO). MUST NOT TO BE USED IN DIAGNOSTIC OR THERAPEUTIC APPLICATIONS.



STJ72650 (5µg/ml) staining of paraffin embedded Human Skin. Steamed antigen retrieval with citrate buffer pH 6, AP-staining.