

## Anti-cardiolipin synthase 1 antibody (Internal) (STJ72640)

### GENERAL INFORMATION

Product Type	Primary antibodies
Applications	Pep-ELISA/WB/IHC
Host / Source	Goat
Reactivity	Human/Mouse/Rat/Dog/Pig/Cow

### PRODUCT PROPERTIES

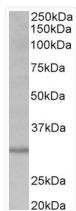
Clonality	Polyclonal
Concentration	0.5 mg/mL
Conjugation	Unconjugated
Purification	Purified from goat serum by ammonium sulphate precipitation followed by antigen affinity chromatography using the immunizing peptide.
Dilution Range	Peptide ELISA: antibody detection limit dilution 1:64000. WB: Approx 30kDa band observed in lysates of cell line HEK293 (calculated MW of 32.6kDa according to NP_061968.1). Recommended concentration: 0.2-0.6µg/ml. Primary incubation was 1 hour.
Formulation	0.5 mg/ml in Tris saline, 0.02% sodium azide, pH7.3 with 0.5% bovine serum albumin. NA
Isotype	IgG
Storage Instruction	Store at -20°C on receipt and minimise freeze-thaw cycles.

### TARGET INFORMATION

Gene ID	<a href="#">54675</a>
Gene Symbol	<a href="#">CRLS1</a>
UniProt ID	<a href="#">CRLS1_HUMAN</a>
Immunogen Region	Internal
Immunogen Sequence	RSALGSALDPLADK
Specificity	This antibody is expected to recognize both reported isoforms (NP_061968.1; NP_001120930.1).

### ADDITIONAL INFORMATION

Note STRICTLY FOR FURTHER SCIENTIFIC RESEARCH USE ONLY (RUO). MUST NOT TO BE USED IN DIAGNOSTIC OR THERAPEUTIC APPLICATIONS.



STJ72640 (0.2µg/ml) staining of HEK293 lysate (35µg protein in RIPA buffer). Detected by chemiluminescence.