

Anti-Hsd11b1-Mouse antibody (Internal) (STJ72636)

GENERAL INFORMATION

Product Type	Primary antibodies
Applications	Pep-ELISA/WB
Host / Source	Goat
Reactivity	Mouse/Rat

PRODUCT PROPERTIES

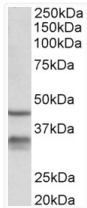
Clonality	Polyclonal
Concentration	0.5 mg/mL
Conjugation	Unconjugated
Purification	Purified from goat serum by ammonium sulphate precipitation followed by antigen affinity chromatography using the immunizing peptide.
Dilution Range	Peptide ELISA: antibody detection limit dilution 1:32000. WB: Approx 32kDa band observed in Mouse Lung lysates (calculated MW of 32.4kDa according to NP_032314.2). Recommended concentration: 0.3-1µg/ml. An additional band of unknown identity was
Formulation	0.5 mg/ml in Tris saline, 0.02% sodium azide, pH7.3 with 0.5% bovine serum albumin. NA
Isotype	IgG
Storage Instruction	Store at -20°C on receipt and minimise freeze-thaw cycles.

TARGET INFORMATION

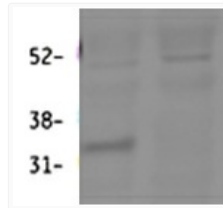
Immunogen Region	Internal
Immunogen Sequence	TARSEGLQKVSR

ADDITIONAL INFORMATION

Note **STRICTLY FOR FURTHER SCIENTIFIC RESEARCH USE ONLY (RUO). MUST NOT TO BE USED IN DIAGNOSTIC OR THERAPEUTIC APPLICATIONS.**



STJ72636 (0.3µg/ml) staining of Mouse Lung lysate (35µg protein in RIPA buffer). Primary incubation was 1 hour. Detected by chemiluminescence.



STJ72636 (0.3µg/ml) staining of Mouse Lung lysate (60µg protein in RIPA buffer). First lane shows wildtype and second lane shows knockout background. Primary incubation was overnight. Detected by fluorescence with Li-cor). Data obtained from Prof. K. Chapman and Zhenguang Zhang, Centre for Cardiovascular Sciences, Queen's Medical Research Institute, Edinburgh, UK