

Anti-TGFBR1 antibody (50-63) (STJ72633)

GENERAL INFORMATION

| | |
|---------------|-----------------------------|
| Product Type | Primary antibodies |
| Applications | Pep-ELISA/WB/IHC/FC |
| Host / Source | Goat |
| Reactivity | Human/Mouse/Rat/Dog/Pig/Cow |

PRODUCT PROPERTIES

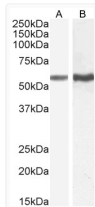
| | |
|---------------------|-----------------------------------------------------------------------------------------------------------------------------------------------------------------------------------------------------------------------------------------------------------|
| Clonality | Polyclonal |
| Concentration | 0.5 mg/mL |
| Conjugation | Unconjugated |
| Purification | Purified from goat serum by ammonium sulphate precipitation followed by antigen affinity chromatography using the immunizing peptide. |
| Dilution Range | Peptide ELISA: antibody detection limit dilution 1:64000. WB: Approx 55kDa band observed in Rat Liver and Rat Lung lysates (calculated MW of 55.6kDa according to Rat NP_036907.2). Recommended concentration: 0.03-0.1µg/ml. Primary incubation 1 hou |
| Formulation | 0.5 mg/ml in Tris saline, 0.02% sodium azide, pH7.3 with 0.5% bovine serum albumin. NA |
| Isotype | IgG |
| Storage Instruction | Store at -20°C on receipt and minimise freeze-thaw cycles. |

TARGET INFORMATION

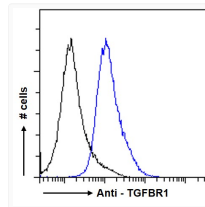
| | |
|--------------------|--------------------------------------------------------------------------------------------------------------------------------------------------------------------------|
| Gene ID | 7046 |
| Gene Symbol | TGFBRI |
| UniProt ID | TGFR1_HUMAN |
| Immunogen Region | 50-63 |
| Immunogen Sequence | TDGLCFVSVTETTD |
| Specificity | This antibody is expected to recognize both reported isoforms (NP_004603.1; NP_001124388.1). The immunizing peptide represents part of a potential extracellular domain. |

ADDITIONAL INFORMATION

Note **STRICTLY FOR FURTHER SCIENTIFIC RESEARCH USE ONLY (RUO). MUST NOT TO BE USED IN DIAGNOSTIC OR THERAPEUTIC APPLICATIONS.**



STJ72633 (0.1µg/ml) staining of Rat Liver (A) and (0.03µg/ml) Lung (B) lysate (35µg protein in RIPA buffer). Detected by chemiluminescence.



STJ72633 Flow cytometric analysis of paraformaldehyde fixed HeLa cells (blue line), permeabilized with 0.5% Triton. Primary incubation 1hr (10µg/ml) followed by Alexa Fluor 488 secondary antibody (1µg/ml). IgG control: Unimmunized goat IgG (black line) followed by Alexa Fluor 488 secondary antibody.