

Anti-Fgf23-Mouse antibody (Internal) (STJ72630)

GENERAL INFORMATION

Product Type	Primary antibodies
Applications	Pep-ELISA/WB
Host / Source	Goat
Reactivity	Mouse/Rat

PRODUCT PROPERTIES

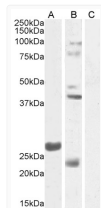
Clonality	Polyclonal
Concentration	0.5 mg/mL
Conjugation	Unconjugated
Purification	Purified from goat serum by ammonium sulphate precipitation followed by antigen affinity chromatography using the immunizing peptide.
Dilution Range	Peptide ELISA: antibody detection limit dilution 1:128000. WB: Approx 27kDa band observed in Mouse Testis lysates (calculated MW of 27.7kDa according to NP_073148.1). Some lysates showed prominent bands at approx. 24+38kDa which were successfully
Formulation	0.5 mg/ml in Tris saline, 0.02% sodium azide, pH7.3 with 0.5% bovine serum albumin. NA
Isotype	IgG
Storage Instruction	Store at -20°C on receipt and minimise freeze-thaw cycles.

TARGET INFORMATION

Immunogen Region	Internal
Immunogen Sequence	ENGYDVYLSQKHH

ADDITIONAL INFORMATION

Note STRICTLY FOR FURTHER SCIENTIFIC RESEARCH USE ONLY (RUO). MUST NOT TO BE USED IN DIAGNOSTIC OR THERAPEUTIC APPLICATIONS.



STJ72630 (1 µg/ml) staining of Mouse Testes lysate 1 (A) and Testes lysate 2 (B) + peptide (C) (35 µg protein in RIPA buffer). Detected by chemiluminescence.