

Anti-IDH3G antibody (337-350) (STJ72611)

GENERAL INFORMATION

Product Type	Primary antibodies
Applications	Pep-ELISA/WB/IHC
Host / Source	Goat
Reactivity	Human/Mouse/Rat/Dog/Pig/Cow

PRODUCT PROPERTIES

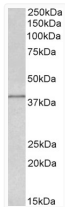
Clonality	Polyclonal
Concentration	0.5 mg/mL
Conjugation	Unconjugated
Purification	Purified from goat serum by ammonium sulphate precipitation followed by antigen affinity chromatography using the immunizing peptide.
Dilution Range	Peptide ELISA: antibody detection limit dilution 1:16000. WB: Approx 38kDa band observed in lysates of cell line MCF7 and of Rat and Pig Heart (calculated MW of 41.5kDa according to NP_777358.1). Recommended concentration: 0.5-2µg/ml. IHC: Pa
Formulation	0.5 mg/ml in Tris saline, 0.02% sodium azide, pH7.3 with 0.5% bovine serum albumin. NA
Isotype	IgG
Storage Instruction	Store at -20°C on receipt and minimise freeze-thaw cycles.

TARGET INFORMATION

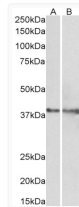
Gene ID	3421
Gene Symbol	IDH3G
UniProt ID	IDH3G_HUMAN
Immunogen Region	337-350
Immunogen Sequence	DHLKLSYATSIRK
Specificity	This antibody is expected to recognize both reported isoforms (NP_004126.1; NP_777358.1).

ADDITIONAL INFORMATION

Note **STRICTLY FOR FURTHER SCIENTIFIC RESEARCH USE ONLY (RUO). MUST NOT TO BE USED IN DIAGNOSTIC OR THERAPEUTIC APPLICATIONS.**



STJ72611 (0.5 µg/ml) staining of MCF7 lysate (35 µg protein in RIPA buffer). Primary incubation was 1 hour. Detected by chemiluminescence.



STJ72611 (1 µg/ml) staining of Rat (A) and Pig (B) Heart lysate (35 µg protein in RIPA buffer). Primary incubation was 1 hour. Detected by chemiluminescence.