

## Anti-IDH3B antibody (33-46) (STJ72610)

### GENERAL INFORMATION

Product Type	Primary antibodies
Applications	Pep-ELISA/WB
Host / Source	Goat
Reactivity	Human/Mouse/Rat/Dog/Pig

### PRODUCT PROPERTIES

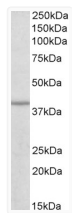
Clonality	Polyclonal
Concentration	0.5 mg/mL
Conjugation	Unconjugated
Purification	Purified from goat serum by ammonium sulphate precipitation followed by antigen affinity chromatography using the immunizing peptide.
Dilution Range	Peptide ELISA: antibody detection limit dilution 1:1000. WB: Approx 39kDa band observed in Mouse, Rat and Pig Heart lysates and in Human and Mouse Skeletal Muscle lysates (calculated MW of 41.9kDa according to NP_777280.1). Recommended concentration
Formulation	0.5 mg/ml in Tris saline, 0.02% sodium azide, pH7.3 with 0.5% bovine serum albumin. NA
Isotype	IgG
Storage Instruction	Store at -20°C on receipt and minimise freeze-thaw cycles.

### TARGET INFORMATION

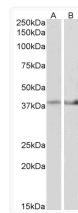
Gene ID	<a href="#">3420</a>
Gene Symbol	<a href="#">IDH3B</a>
UniProt ID	<a href="#">IDH3B_HUMAN</a>
Immunogen Region	33-46
Immunogen Sequence	HAASRSQAEDVRVE
Specificity	This antibody is expected to recognize isoform a (NP_008830.2) and isoform b (NP_777280.1).

### ADDITIONAL INFORMATION

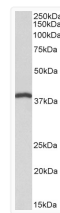
Note **STRICTLY FOR FURTHER SCIENTIFIC RESEARCH USE ONLY (RUO). MUST NOT TO BE USED IN DIAGNOSTIC OR THERAPEUTIC APPLICATIONS.**



STJ72610 (0.3 µg/ml) staining of Human Skeletal muscle lysate (35 µg protein in RIPA buffer). Primary incubation was 1 hour. Detected by chemiluminescence.



STJ72610 (2 µg/ml) staining of Mouse Heart (A) and Mouse Muscle (B) lysate (35 µg protein in RIPA buffer). Primary incubation was 1 hour. Detected by chemiluminescence.



STJ72610 (0.1 µg/ml) staining of Pig Heart lysate (35 µg protein in RIPA buffer). Primary incubation was 1 hour. Detected by chemiluminescence.