

## Anti-IDH3A antibody (C-Term) (STJ72608)

### GENERAL INFORMATION

Product Type	Primary antibodies
Applications	Pep-ELISA/WB/IHC
Host / Source	Goat
Reactivity	Human/Mouse/Rat/Dog/Pig/Cow

### PRODUCT PROPERTIES

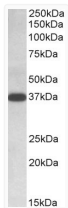
Clonality	Polyclonal
Concentration	0.5 mg/mL
Conjugation	Unconjugated
Purification	Purified from goat serum by ammonium sulphate precipitation followed by antigen affinity chromatography using the immunizing peptide.
Dilution Range	Peptide ELISA: antibody detection limit dilution 1:32000. WB: Approx 37kDa band observed in lysates of Human Lymph Nodes, and of cell line DAUDI, and 38kDa in Human, Mouse and Rat Spleen lysates and in Pig Spleen and Skeletal Muscle lysates (calc)
Formulation	0.5 mg/ml in Tris saline, 0.02% sodium azide, pH7.3 with 0.5% bovine serum albumin. NA
Isotype	IgG
Storage Instruction	Store at -20°C on receipt and minimise freeze-thaw cycles.

### TARGET INFORMATION

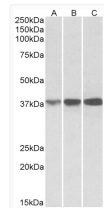
Gene ID	<a href="#">3419</a>
Gene Symbol	<a href="#">IDH3A</a>
UniProt ID	<a href="#">IDH3A_HUMAN</a>
Immunogen Region	C-Term
Immunogen Sequence	DFTEEICRRVKDLD

### ADDITIONAL INFORMATION

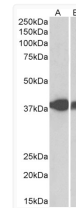
Note STRICTLY FOR FURTHER SCIENTIFIC RESEARCH USE ONLY (RUO). MUST NOT TO BE USED IN DIAGNOSTIC OR THERAPEUTIC APPLICATIONS.



STJ72608 (0.1 µg/ml) staining of Human Lymph Nodes lysate (35 µg protein in RIPA buffer). Detected by chemiluminescence.



STJ72608 (0.1 µg/ml) staining of Human (A), Mouse (B) and Rat (C) Spleen lysates (35 µg protein in RIPA buffer). Detected by chemiluminescence.



STJ72608 (0.3 µg/ml) staining of Pig Spleen (A) and Pig Skeletal Muscle (B) lysates (35 µg protein in RIPA buffer). Detected by chemiluminescence.