

Anti-CB1-Isoform a antibody (N-Term) (STJ72593)

GENERAL INFORMATION

| | |
|---------------|-------------------------|
| Product Type | Primary antibodies |
| Applications | Pep-ELISA/WB |
| Host / Source | Goat |
| Reactivity | Human/Mouse/Rat/Dog/Cow |

PRODUCT PROPERTIES

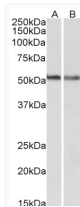
| | |
|---------------------|---|
| Clonality | Polyclonal |
| Concentration | 0.5 mg/mL |
| Conjugation | Unconjugated |
| Purification | Purified from goat serum by ammonium sulphate precipitation followed by antigen affinity chromatography using the immunizing peptide. |
| Dilution Range | Peptide ELISA: antibody detection limit dilution 1:64000. WB: Approx 52kDa band observed in lysates of cell lines A549 and NIH3T3 (calculated MW of 52.9kDa according to Human NP_057167.2 and 52.8kDa according to Mouse NP_031752.1). Recommended co |
| Formulation | 0.5 mg/ml in Tris saline, 0.02% sodium azide, pH7.3 with 0.5% bovine serum albumin. NA |
| Isotype | IgG |
| Storage Instruction | Store at -20°C on receipt and minimise freeze-thaw cycles. |

TARGET INFORMATION

| | |
|--------------------|--|
| Gene ID | 1268 |
| Gene Symbol | CNR1 |
| UniProt ID | CNR1_HUMAN |
| Immunogen Region | N-Term |
| Immunogen Sequence | SNDIQYEDIKGDMS |
| Specificity | This antibody is expected to recognize reported isoform a (NP_057167.2) only. Reported variants represent identical protein: NP_001153731.1, NP_001153732.1, NP_057167.2, NP_001153730.1, NP_001153698.1 |

ADDITIONAL INFORMATION

Note STRICTLY FOR FURTHER SCIENTIFIC RESEARCH USE ONLY (RUO). MUST NOT TO BE USED IN DIAGNOSTIC OR THERAPEUTIC APPLICATIONS.



STJ72593 (0.3 µg/ml) staining of A549 (A) and NIH3T3 (B) lysates (35 µg protein in RIPA buffer). Detected by chemiluminescence.