

## Anti-PAPD5 antibody (497-510) (STJ72584)

### GENERAL INFORMATION

Product Type	Primary antibodies
Applications	Pep-ELISA/WB
Host / Source	Goat
Reactivity	Human/Mouse/Rat/Cow

### PRODUCT PROPERTIES

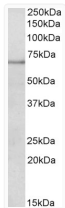
Clonality	Polyclonal
Concentration	0.5 mg/mL
Conjugation	Unconjugated
Purification	Purified from goat serum by ammonium sulphate precipitation followed by antigen affinity chromatography using the immunizing peptide.
Dilution Range	Peptide ELISA: antibody detection limit dilution 1:32000. WB: Approx 70kDa band observed in Mouse and Rat Spleen lysates (calculated MW of 69.4kDa according to Mouse NP_001157971.1. Recommended concentration: 0.2-0.6µg/ml.
Formulation	0.5 mg/ml in Tris saline, 0.02% sodium azide, pH7.3 with 0.5% bovine serum albumin. NA
Isotype	IgG
Storage Instruction	Store at -20°C on receipt and minimise freeze-thaw cycles.

### TARGET INFORMATION

Gene ID	<a href="#">64282</a>
Gene Symbol	<a href="#">TENT4B</a>
UniProt ID	<a href="#">PAPD5_HUMAN</a>
Immunogen Region	497-510
Immunogen Sequence	TDEVATYRDWISKQ
Specificity	This antibody is expected to recognize both reported isoforms (NP_001035374.2; NP_001035375.2).

### ADDITIONAL INFORMATION

Note STRICTLY FOR FURTHER SCIENTIFIC RESEARCH USE ONLY (RUO). MUST NOT TO BE USED IN DIAGNOSTIC OR THERAPEUTIC APPLICATIONS.



STJ72584 (0.2µg/ml) staining of Mouse Spleen lysate (35µg protein in RIPA buffer). Primary incubation was 1 hour. Detected by chemiluminescence.